

NEWS
2020
COLLECTION
UPDATE

LIGHT&LIFE
— DESDE 1984 —

ARKOSLIGHT®

THE HOME OF LIGHT

ARKOSLIGHT HEADQUARTERS
VALENCIA · SPAIN



UNA NUEVA COLECCIÓN

DOS VOLÚMENES



The 2019 Collection

Versión vigente del catálogo general actual. Empléela para obtener la raíz de los códigos de los productos actualizados en este catálogo News 2020. Si no dispone de 'The New Collection 2019', descárguela online o solicítela a su comercial o punto de venta.



News 2020 Collection Update

News 2020. Con productos completamente nuevos y luminarias que han sido actualizadas. Para estas últimas, le ofrecemos configuradores de código para ayudarle a realizar su pedido.

DESIGN SIGN AWARDS

2 DESIGN PLUS



FLAP
2016

LEX ECO
2012

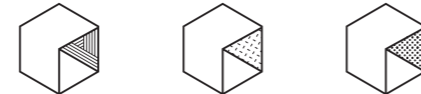
2 GOOD DESIGN



SIX
2018

IO
2017

3 ARCHIPRODUCTS DESIGN AWARDS



ART
2019

TOP
2018

POINTER
2017

2 EUROPEAN PRODUCT DESIGN AWARD



TOP
2019

POP UP
2018

2 FX AWARD



ART
2019

PLUS
2019

1 PREMIO BIENAL IBEROAMERICANA DE DISEÑO



ZEN
2014

1 BOY AWARD



BLACK FOSTER
2019

8 IF DESIGN AWARD



RHINO
2020

BLACK FOSTER
2019

SHOT LIGHT
2017

IO
2017

FLAP
2016

SALT
2015

SLIMGOT
2014

ZEN
2014

5 RED DOT DESIGN AWARD



ART
2019

DRUM
2016

SWAP
2015

LARK-111
2014

SLIMGOT
2014

7 A'DESIGN AWARD



FLAP
2016

DRUM
2016

SPIN
2015

THOR
2015

SKY
2015

DROP
2015

ZEN
2014

7 DELTA AWARDS



POINTER
2018

SHOT LIGHT
2018 Selección

IO
2016

AURAE
2014 Selección

STRAM
2014 Selección

ZEN
2013 Selección

LEX ECO
2012 Selección

7 GERMAN DESIGN AWARD



SIX
2019

THOR
2016 Nominee

SPIN
2016 Nominee

SALT
2016 Nominee

SWAP
2016 Nominee

LARK-111
2016 Nominee

SLIMGOT
2016 Nominee

5 ICONIC AWARDS



SHOT LIGHT
2017

PUCK
2017

OLYMPIA
2017 Selection

THOR
2016

SPIN
2016

4 PREMIOS ADCV



PLUS
2019

ART
2019

IO
2017

FLAP
2017

HIGHLIGHTS

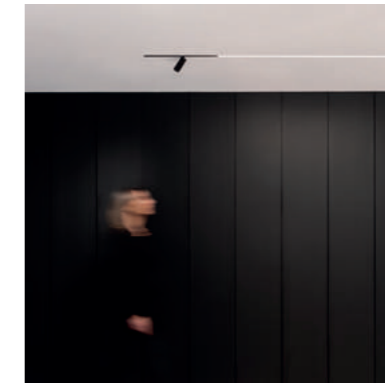
ARKOSLIGHT TIENE EL PLACER DE PRESENTAR LOS ÚLTIMOS DISEÑOS Y ACTUALIZACIONES DE PRODUCTO DE LA FIRMA. DESCUBRA A CONTINUACIÓN LAS PROPUESTAS DE ARKOSLIGHT PARA QUE SUS PROYECTOS SIGAN A LA VANGUARDIA DE LA CULTURA DE LA LUZ Y EL DISEÑO INDUSTRIAL.



P. 010
Minimal Track
Nuevo sistema de carril miniaturizado.



P. 030
Track 48V
Nuevos carriles de bajo voltaje 48V.



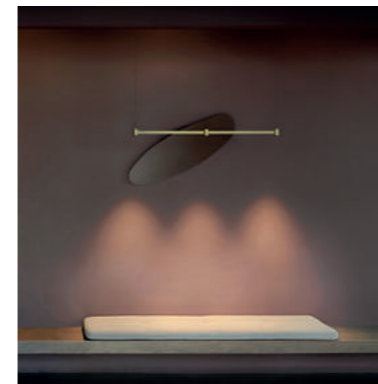
P. 040
Nueva Line
Ahora disponible en tres nuevas longitudes.



P. 042
Black Foster Spotlights
Con los proyectores Plus Mini, Six S y Fit 35.



P. 048
Black Foster, now Asymmetric
'Recessed', 'Trimless' y 'Custom'.



P. 056
Art Modular
Nuevas medidas y acabados.



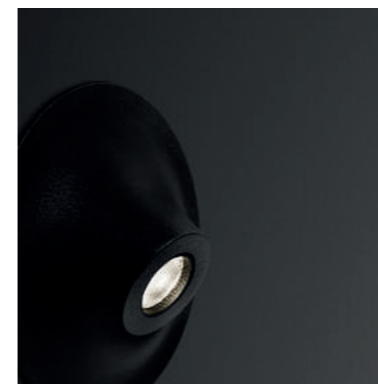
P. 062
Wellit
Luminaria orientable para retail y contract.



P. 068
Lex Eco Mini
La versión de tamaño reducido de Lex Eco.



P. 072
Stram Surface Mini
Stram Surface en una versión mini.



P. 074
Rinho
Bañador de suelo semi-empotrado.



P. 078
Wally
Bañador de suelo de estética arquitectural.



P. 080
Other Updated Products
Nuevas actualizaciones de productos.

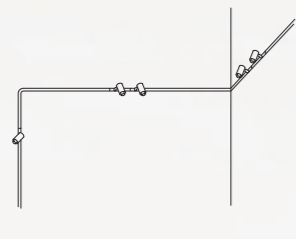


MINIMAL TRACK

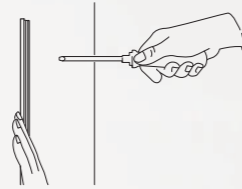
El sistema de carril miniaturizado más increíble del mercado.

MINIMAL TRACK INSTALLATION

1. Cree su propio diseño con Minimal Track.



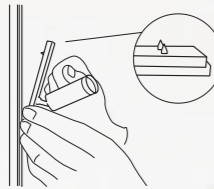
2. Fije la estructura en la pared.



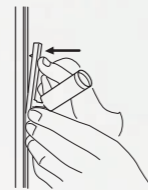
3. Electrifique todo el recorrido con la goma elástica.



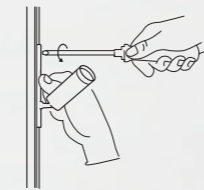
4. Coloque la luminaria desde el extremo opuesto del conector.



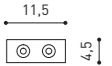
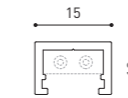
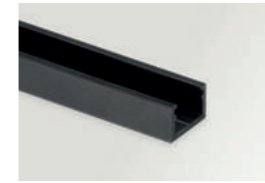
5. Insértelo y pínchelo en la goma.



6. Asegúrelo.



24V SYSTEM MINIMAL TRACK



MINIMAL TRACK 24V Profile 2m

A384-02-00- | N |

MINIMAL TRACK 24V Rubber Cable n x 1m

A384-00-01- | N |

n = Total Length of System.

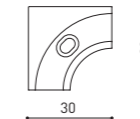


24V | Max. 4A | CE | III

MINIMAL TRACK 24V Corner 90° 1 Plane

A384-00-02- | N |

Cable Length = 35mm.



MINIMAL TRACK 24V End Cap

A384-00-05- | N |



MINIMAL TRACK 24V Corner 90° 1 Plane Rounded

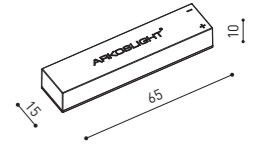
A384-00-03- | N |

Cable Length = 35mm.



MINIMAL TRACK 24V Connection Box

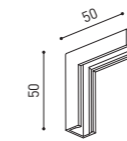
A384-00-06- | N |



MINIMAL TRACK 24V Corner 90° 2 Planes

A384-00-04- | N |

Cable Length = 100mm.



			P	V	D [A x B x C]
MINIMAL TRACK 24V Power Supply Box	ON/OFF	A384-00-07- N	40W	24V	280 x 30 x 24mm
		A384-00-08- N	100W	24V	280 x 30 x 24mm

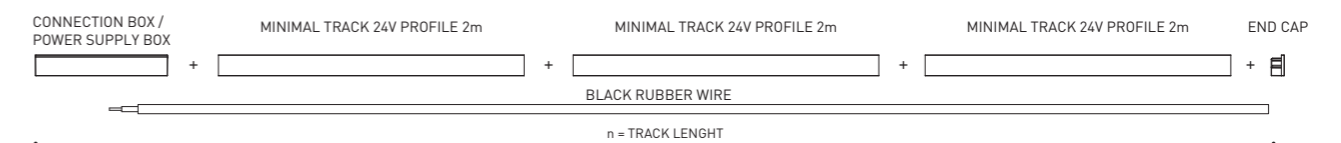
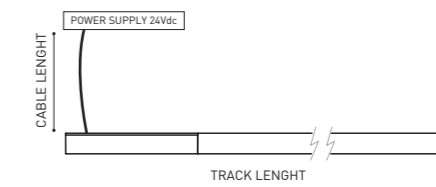
Driver must be placed adjacently to the Minimal Track 24Vdc Profile. Included ON/OFF 24Vdc Power Supply.

			P	V	D [A x B x C]
MINIMAL TRACK 24V Remote Power Supply	ON/OFF	0434-01-37	60W	24V	180 x 52 x 30mm
		0433-10-22	100W	24V	295 x 43 x 30mm

Driver must be placed on Remote. Included ON/OFF 24Vdc Power Supply.

DROP VOLTAGE TABLE

POWER [W]	CABLE SECTION [mm ²]	CABLE LENGTH (m)			
		<5	<10	<20	<30
40	0,75	30	30	30	30
	1,5	30	30	30	30
60	0,75	30	30	20	10
	1,5	30	30	30	20
100	0,75	20	10	X	X
	1,5	20	20	10	X



COLOUR | N ■ RAL 9005 |

DIM OPTIONS PLEASE CONSULT



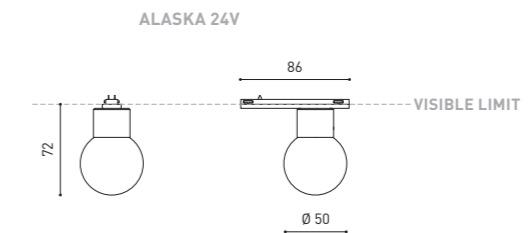


Alaska es la reinterpretación contemporánea a través del diseño de la clásica bombilla de filamento incandescente. Alaska está formada por una esfera de vidrio óptico macizo que refiere simbólicamente al bulbo de cristal de la bombilla tradicional. Su cuerpo compacto es una pieza única que se tornea y se pule manualmente como una obra de joyería. Cada una de las luminarias está elaborada artesanalmente y adquiere, con ello, el valor de una obra decorativa irrepetible.



		P	CCT	I	Flux	LOR
ALASKA 24V	A385-00-00- N	3,5W	2700K	400mA	390Lm	30%
	A385-00-01- N	3,5W	3000K	400mA	410Lm	30%

LED | 24 V | CE | III | IP20 | CRI>90 | L80B10 >60.000h



COLOUR | N ■ RAL 9005 | MATERIAL | AL | OPTICAL GLASS |

» PLEASE CONSULT



Private residence (Spain) | Design: Leticia Vila & Vicente Olivares





		P	CCT	BEAM	I	Flux	LOR		
SIX XS 24V	A389-00-10-	WT	NT	3,5W	2700K	17°	400mA	400Lm	90%
	A389-00-11-	WT	NT	3,5W	3000K	17°	400mA	420Lm	90%
	A389-00-12-	WT	NT	3,5W	4000K	17°	400mA	450Lm	90%
	A389-00-20-	WT	NT	3,5W	2700K	23°	400mA	400Lm	86%
	A389-00-21-	WT	NT	3,5W	3000K	23°	400mA	420Lm	86%
	A389-00-22-	WT	NT	3,5W	4000K	23°	400mA	450Lm	86%
	A389-00-30-	WT	NT	3,5W	2700K	34°	400mA	400Lm	88%
	A389-00-31-	WT	NT	3,5W	3000K	34°	400mA	420Lm	88%
	A389-00-32-	WT	NT	3,5W	4000K	34°	400mA	450Lm	88%

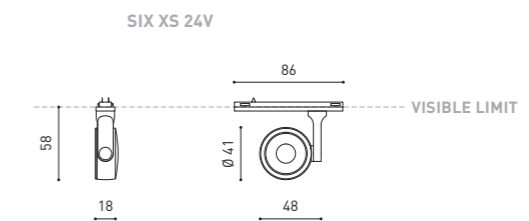
LED | 24 V | **CE** | **III** | **IP20** | **CR1>90** | **L80B10 >60.000h**

MacAdam Step 2 | INCL | MINIMAL TRACK 24V | 355° | 310° | 17° / 23° / 34°

ACCESSORY

SIX High Chromatic LED*

NOT SOLD SEPARATELY



COLOUR | **W** RAL 9016 | **N** RAL 9005 | MATERIAL | **AL** | **PC**

* ACCESSORY & COLOURS AFFECT THE LIGHTING PARAMETERS

» PLEASE CONSULT



		P	CCT	I	Flux	LOR
PLUS Micro 24V	A388-00-00- WT NT	4,7W	2700K	400mA	500Lm	10-17%
	A388-00-01- WT NT	4,7W	3000K	400mA	520Lm	10-17%
	A388-00-02- WT NT	4,7W	4000K	400mA	570Lm	10-17%

LED | 24 V | **CE** | **III** | IP20 | CRI>90

 MacAdam Step 2

 INCL

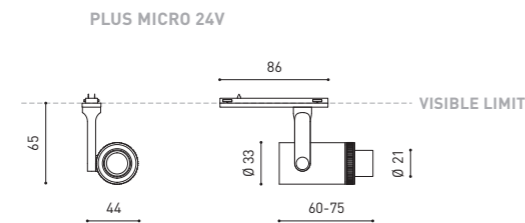
 MINIMAL TRACK 24V

 355°

 180°

 10-35°

 10-35°



COLOUR | W RAL 9016 | N RAL 9005 | MATERIAL | AL | OPTICAL PMMA |

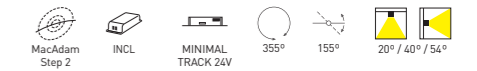
» PLEASE CONSULT





		P	CCT	BEAM	I	Flux	LOR
iO Micro 24V	A387-00-10- WT NT	4,7W	2700K	20°	400mA	500Lm	88%
	A387-00-11- WT NT	4,7W	3000K	20°	400mA	520Lm	88%
	A387-00-12- WT NT	4,7W	4000K	20°	400mA	570Lm	88%
	A387-00-20- WT NT	4,7W	2700K	40°	400mA	500Lm	86%
	A387-00-21- WT NT	4,7W	3000K	40°	400mA	520Lm	86%
	A387-00-22- WT NT	4,7W	4000K	40°	400mA	570Lm	86%
	A387-00-30- WT NT	4,7W	2700K	54°	400mA	500Lm	86%
	A387-00-31- WT NT	4,7W	3000K	54°	400mA	520Lm	86%
	A387-00-32- WT NT	4,7W	4000K	54°	400mA	570Lm	86%

LED | 24V | CE | III | IP20 | CRI>90



ACCESSORIES

NOT SOLD SEPARATELY

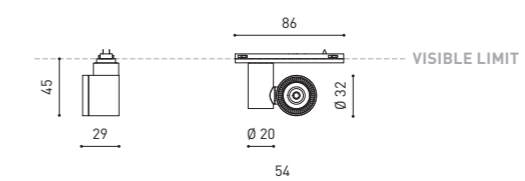
iO Micro 24V Beam Mixer Diffuser* A387-00-00



iO Micro 24V Anti-glare Honeycomb Louver* A387-00-01- | WT | NT |



IO MICRO 24V



COLOUR | W □ RAL 9016 | N ■ RAL 9005 | MATERIAL | AL | PC

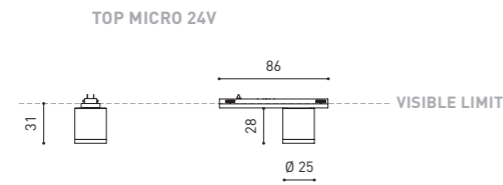
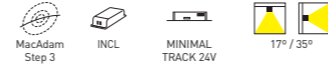
* ACCESSORY AFFECTS THE LIGHTING PARAMETERS

» PLEASE CONSULT



		P	CCT	BEAM	I	Flux	LOR
TOP Micro 24V	A383-00-10- WT NT	2,1W	2700K	17°	700mA	190Lm	92%
	A383-00-11- WT NT	2,1W	3000K	17°	700mA	210Lm	92%
	A383-00-20- WT NT	2,1W	2700K	35°	700mA	190Lm	93%
	A383-00-21- WT NT	2,1W	3000K	35°	700mA	210Lm	93%

LED | 24 V | CE | III | IP20 | CRI>90 | L80B10 >60.000h



COLOUR | W □ RAL 9016 | N ■ RAL 9005 | MATERIAL | AL

» PLEASE CONSULT



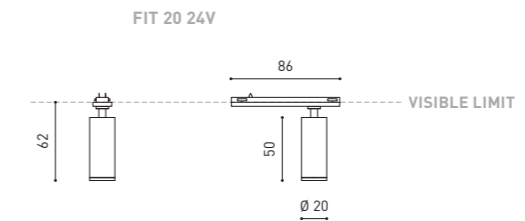
Casa PA (Spain) | Design: Ormos Estudio | Built: STR; Soluciones Técnicas Obras y Rehabilitación | Photography: Diego Opazo



				P	CCT	BEAM	I	Flux	LOR
FIT 20 24V	A386-00-10-	WT	NT	2,1W	2700K	12°	700mA	127Lm	87%
	A386-00-11-	WT	NT	2,1W	3000K	12°	700mA	150Lm	87%
	A386-00-20-	WT	NT	2,1W	2700K	30°	700mA	127Lm	88%
	A386-00-21-	WT	NT	2,1W	3000K	30°	700mA	150Lm	88%
	A386-00-30-	WT	NT	2,1W	2700K	54°	700mA	127Lm	81%
	A386-00-31-	WT	NT	2,1W	3000K	54°	700mA	150Lm	81%

LED | 24 V | **CE** | **III** | IP20 | CRI>90 | L80B10 >50.000h

MacAdam Step 3 | **INCL** | **MINIMAL TRACK 24V** | 355° | 90° | 12° / 30° / 54°



COLOUR | W □ RAL 9016 | N ■ RAL 9005 | MATERIAL | **AL** | **PC** |

» PLEASE CONSULT

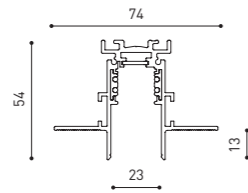


NEW

TRACK 48V

Arkoslight amplía su gama de carriles de bajo voltaje 48V. Ahora el Track 48V "Surface" se comercializa en dos versiones: estándar y "Short", 25mm más corta (54mm vs 29mm). Track 48V Surface Short está destinado a aquellas aplicaciones donde se quiera conseguir una mayor integración del carril en el techo.

48V SYSTEM
TRACK 48V



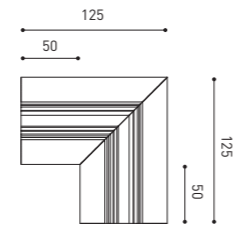
TRACK 48V TRIMLESS

TRACK 48V TRIMLESS 1m	A338-01-00-	N
TRACK 48V TRIMLESS 2m	A338-02-00-	N
TRACK 48V TRIMLESS 3m	A338-03-00-	N
TRACK 48V TRIMLESS Corner 90° One Plane	A338-06-00-	N
TRACK 48V TRIMLESS Corner 90° Two Planes	A338-07-00-	N

PLASTERBOARD CEILING, MANDATORY THICKNESS 12,5mm.
RECOMMENDED FOR INSTALLATIONS WHERE THE PROFILE CAN BE
INSTALLED BEFORE THE FALSE PLASTERBOARD CEILING.

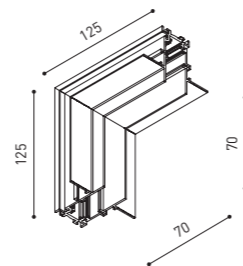


TRACK 48V TRIMLESS
Corner 90° One Plane

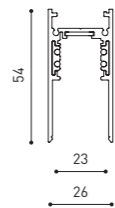


*Electrical connection not included

TRACK 48V TRIMLESS
Corner 90° Two Planes



*Electrical connection not included

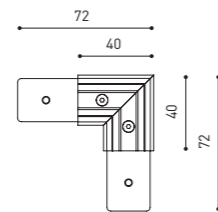


TRACK 48V SURFACE

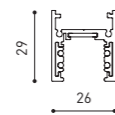
TRACK 48V SURFACE 1m	A338-11-00-	N
TRACK 48V SURFACE 2m	A338-12-00-	N
TRACK 48V SURFACE 3m	A338-13-00-	N
TRACK 48V SURFACE Corner 90° One Plane	A338-14-00-	N



TRACK 48V SURFACE
Corner 90° One Plane



*Electrical connection not included

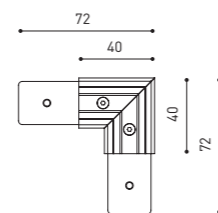


TRACK 48V SURFACE SHORT

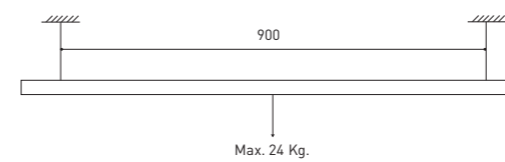
TRACK 48V SURFACE SHORT 1m	A338-21-00-	N
TRACK 48V SURFACE SHORT 2m	A338-22-00-	N
TRACK 48V SURFACE SHORT 3m	A338-23-00-	N
TRACK 48V SURFACE SHORT Corner 90° One Plane	A338-24-00-	N



TRACK 48V SURFACE SHORT
Corner 90° One Plane



*Electrical connection not included



		P	V	D
CONSTANT VOLTAGE	0434-01-21	75W	48V	180 x 52 x 30mm
LED POWER SUPPLY	0434-01-22	150W	48V	240 x 60 x 49mm

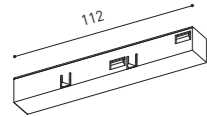
DROP VOLTAGE TABLE

POWER (W)	CABLE SECTION (mm ²)	CABLE LENGTH (m)			
		5	10	20	30
75	0,75	50	50	30	X
	1,5	50	50	50	50
150	0,75	40	15	X	X
	1,5	50	40	20	X

ACCESSORIES

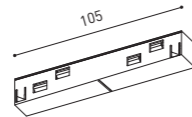
TRACK 48V

ALL 48V TRACKS



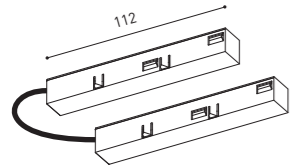
TRACK 48V Live-End Connector

A338-00-01- | N |



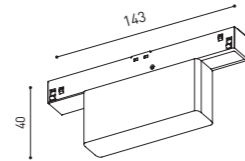
TRACK 48V Central Connector

A338-00-02- | N |



TRACK 48V Corner 90° Connector

A338-00-12- | N |



TRACK 48V Wireless Control

0434-01-31- | N | Casambi/AAG Stucchi App

0434-01-32- | N | AAG Stucchi App

TRIMLESS 48V



TRACK 48V TRIMLESS Short T-Bracket

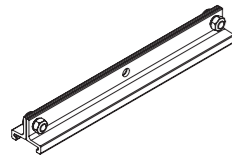
A338-00-03



TRACK 48V TRIMLESS Clamp for M6 ROD

A338-00-09

*See accessories quantities



TRACK 48V TRIMLESS Long T-Bracket

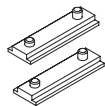
A338-00-04



TRACK 48V TRIMLESS Track Clamp

A338-00-10

*See accessories quantities



TRACK 48V TRIMLESS Straight Joiners (2 units)

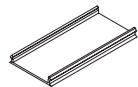
A338-00-05



TRACK 48V TRIMLESS Suspension Kit

A338-00-08

*See accessories quantities



TRACK 48V TRIMLESS Plaster Installation Guard 1m

A338-00-21

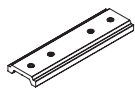
* SUGGESTED MOUNTING ACCESSORIES QUANTITIES

1000mm - 2 Pcs.

2000mm - 3 Pcs.

3000mm - 4 Pcs.

SURFACE, SUSPENSION, SURFACE SHORT & SUSPENSION SHORT 48V



TRACK 48V SURFACE Straight Joiner

A338-00-11- | N |

COLOUR | N ■ |

ACCESSORIES

TRACK 48V

TRIMLESS, SURFACE & SUSPENSION 48V



TRACK 48V TRIMLESS & SURFACE End

A338-00-06- | N |



TRACK 48V TRIMLESS & SURFACE End Feed

A338-00-07- | N |

SURFACE SHORT & SUSPENSION SHORT 48V



TRACK 48V SURFACE SHORT End

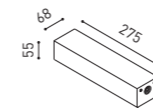
A338-00-18- | N |



TRACK 48V SURFACE SHORT End Feed

A338-00-19- | N |

SURFACE & SURFACE SHORT 48V



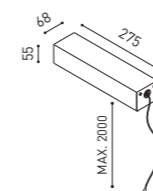
TRACK 48V Power Supply Case

A338-00-20- | N |



*To be installed aside 48V Surface Tracks
Power supply not included

SUSPENSION & SUSPENSION SHORT 48V

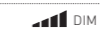


TRACK 48V Wired Power Supply Case

A338-00-22- | N |



A338-00-23- | N |

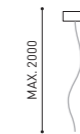


*Power supply not included



TRACK 48V SURFACE Suspension Kit (2 units)

A338-00-15- | N |



TRACK 48V SURFACE Suspension Feed Kit

A338-00-16- | N |



A338-00-17- | N |



*For remote power supply

COLOUR | N ■ |

TRACK 48V SURFACE



TRACK 48V SURFACE SHORT



TRACK 48V Products

CODE Generator Example - FIT

Reference from *The 2019 Collection*

A346 01 10 WT -S

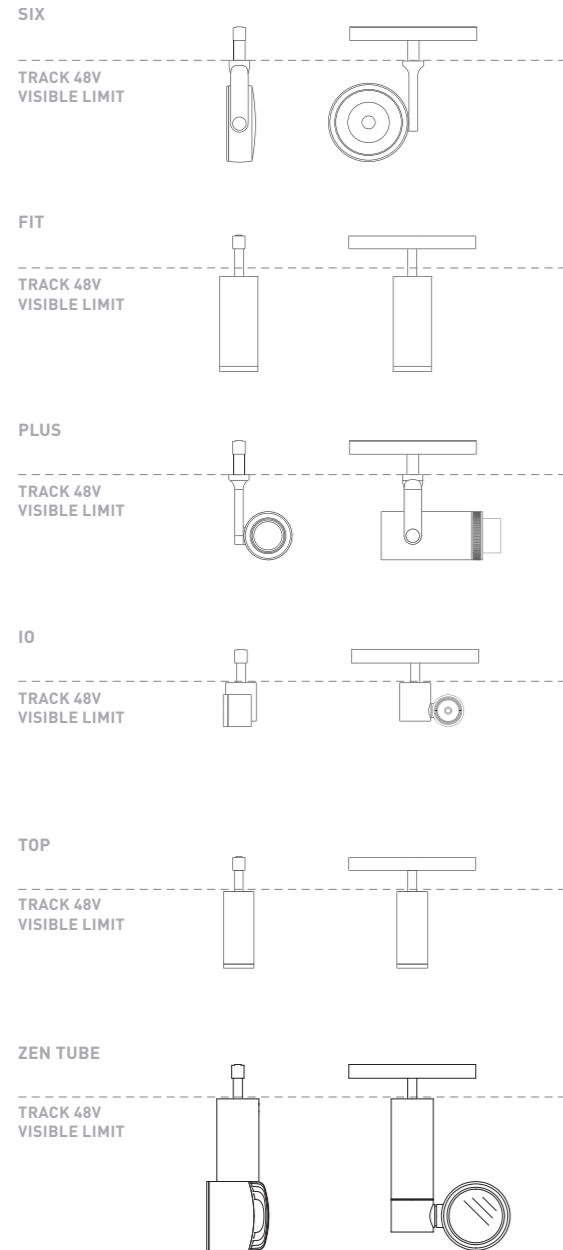
REFERENCE ENDING ADD-ON
Track 48V Surface Short

COMPATIBILIDAD

SEGÚN TIPO DE CARRIL

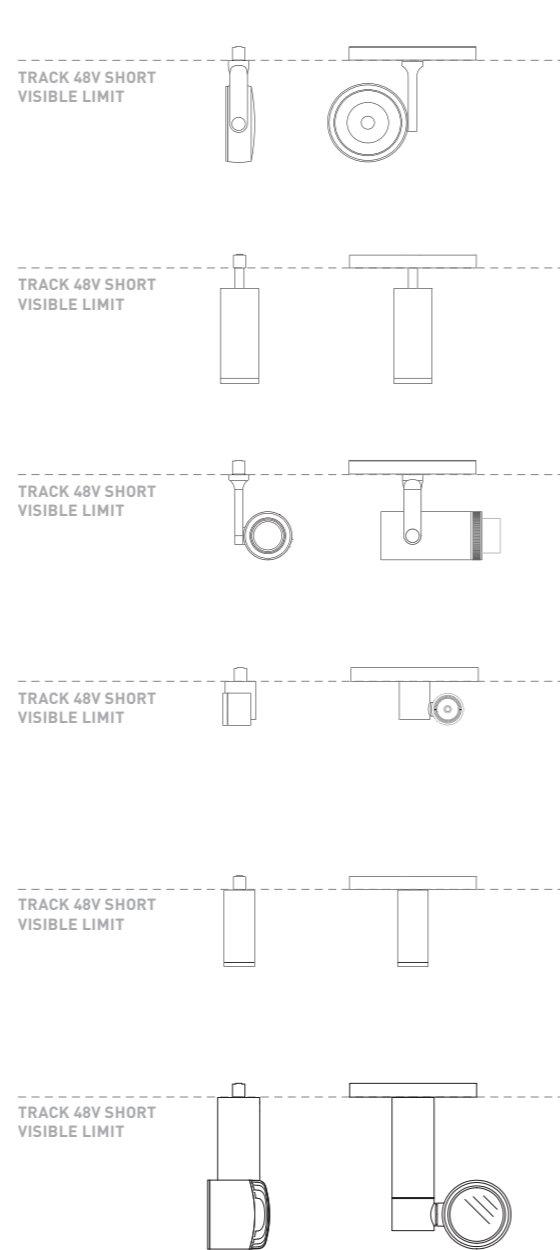
TRACK 48V

Realizar el pedido con los códigos de *The 2019 Collection*



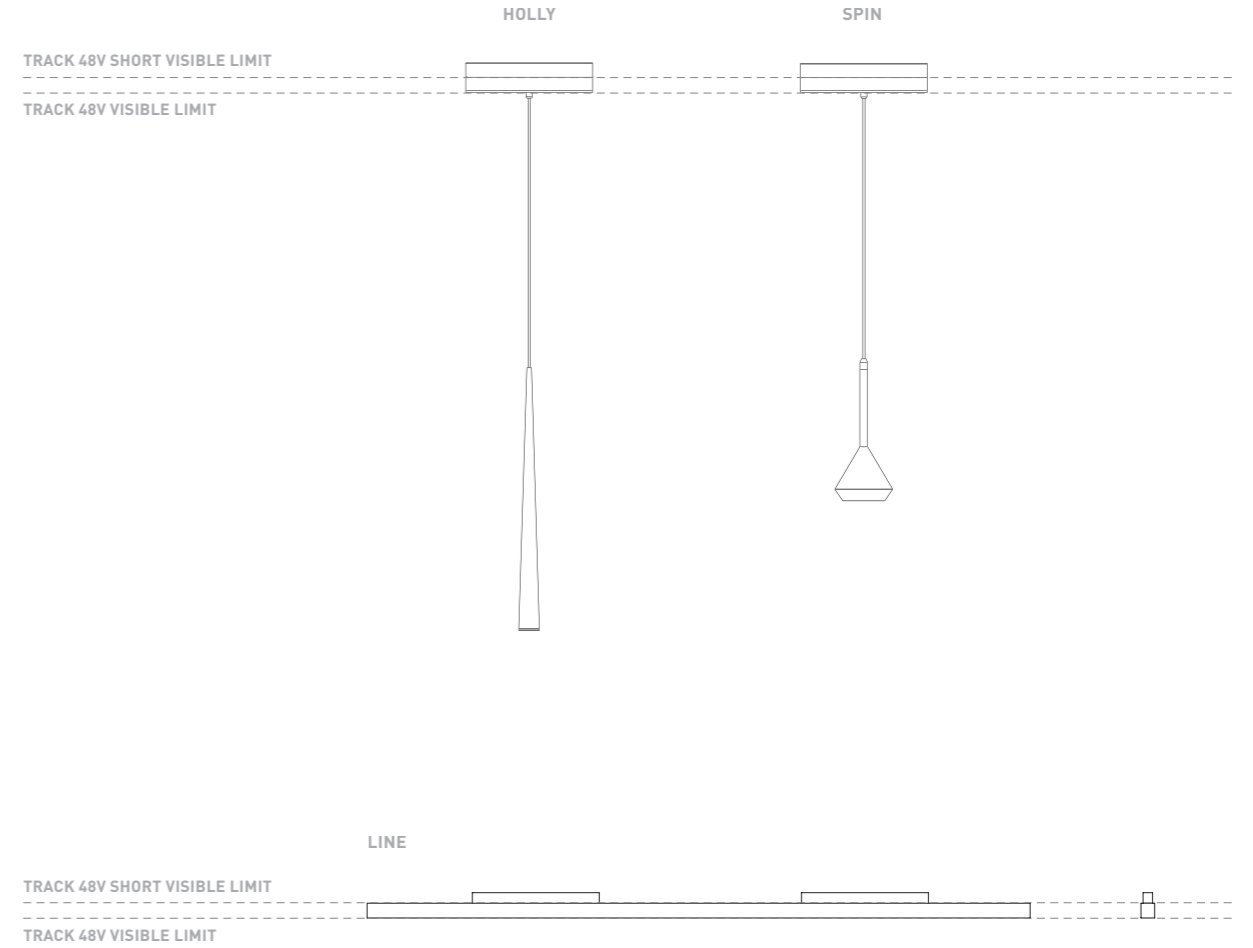
TRACK 48V SURFACE SHORT

Pedir con los códigos de *The 2019 Collection* + la referencia acabada en: "S"



TRACK 48V & TRACK 48V SURFACE SHORT

Códigos de *The 2019 Collection*. Productos con una sola versión para ambos carriles.





NEW
LINE

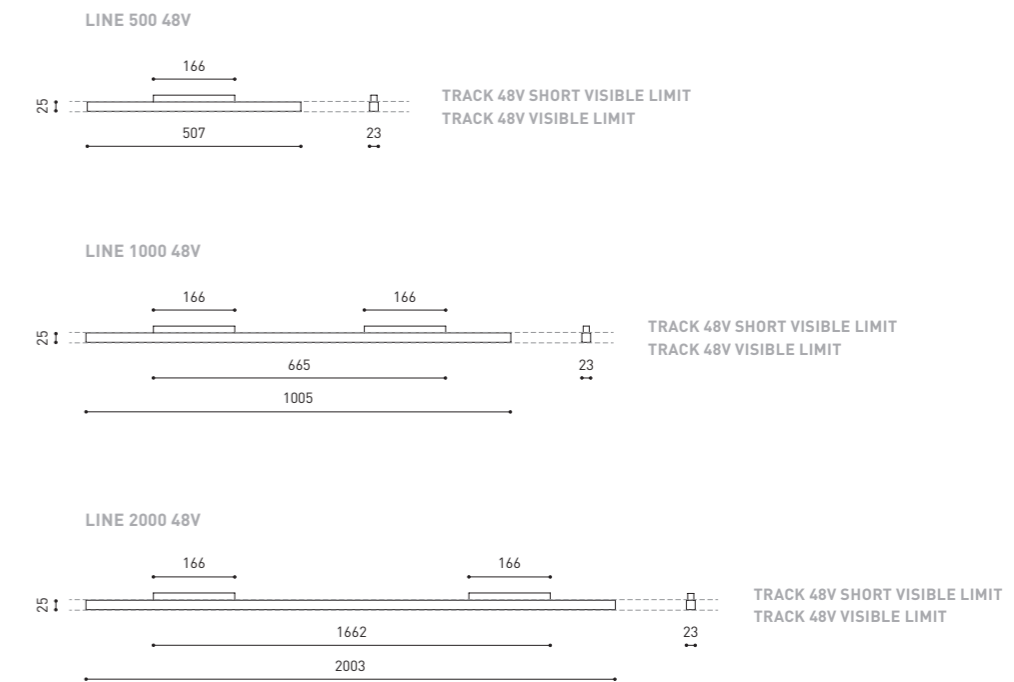


		P	CCT	I	Flux	LOR
LINE 500 48V	A376-10- Ⓞ -0- N	10,5W	2700K	350mA	1480Lm	43%
	A376-10- Ⓞ -1- N	10,5W	3000K	350mA	1600Lm	43%
LINE 1000 48V	A376-20- Ⓞ -0- N	21W	2700K	700mA	2960Lm	43%
	A376-20- Ⓞ -1- N	21W	3000K	700mA	3200Lm	43%
LINE 2000 48V	A376-30- Ⓞ -0- N	42W	2700K	700mA	5920Lm	43%
	A376-30- Ⓞ -1- N	42W	3000K	700mA	6400Lm	43%

LED | 48 V | CE | III | IP20 | CRI>90 | L80B10 >60.000 h
 MacAdam Step 2
OPTONS*
INCL
TRACK 48V
98°
98°

Ⓞ *OPTIONS

- 1 No DIM
- 2 DIM DALI



COLOUR | N ■ | MATERIAL | AL | PC |

» PLEASE CONSULT



BLACK FOSTER

SPOTLIGHTS

Ahora, Black Foster combina el efecto 'The Invisible Black' con iluminación de acento, al tiempo que mantiene una estética elegante y discreta.





		P	CCT	BEAM	I	Flux	LOR
BLACK FOSTER PLUS Mini	A362-00- 0-0- WT NT	6,5W	2700K	10°-41°	700mA	630Lm	20-40%
	A362-00- 0-1- WT NT	6,5W	3000K	10°-41°	700mA	660Lm	20-40%
	A362-00- 0-2- WT NT	6,5W	4000K	10°-41°	700mA	680Lm	20-40%

LED | 220/240 V~ | CE | IP20 | CRI>90 | L80B10 >60.000h

MacAdam Step 2 | OPTIONS* | INCL | 350° | 180° | 10° - 41°



		P	CCT	BEAM	I	Flux	LOR
BLACK FOSTER FIT Ø35	A363-0- 0-10- WT NT	5,5W	2700K	19°	500mA	590Lm	82%
	A363-0- 0-11- WT NT	5,5W	3000K	19°	500mA	630Lm	82%
	A363-0- 0-20- WT NT	5,5W	2700K	29°	500mA	590Lm	80%
	A363-0- 0-21- WT NT	5,5W	3000K	29°	500mA	630Lm	80%
	A363-0- 0-30- WT NT	5,5W	2700K	38°	500mA	590Lm	80%
	A363-0- 0-31- WT NT	5,5W	3000K	38°	500mA	630Lm	80%

LED | 220/240 V~ | CE | IP20 | CRI>90 | L80B10 >60.000h

MacAdam Step 2 | OPTIONS* | INCL | 350° | 90° | 19° / 29° / 38°

0- *OPTIONS

1	No DIM
2	DIM DALI

ACCESSORY

PLUS mini High Chromatic LED**

NOT SOLD SEPARATELY



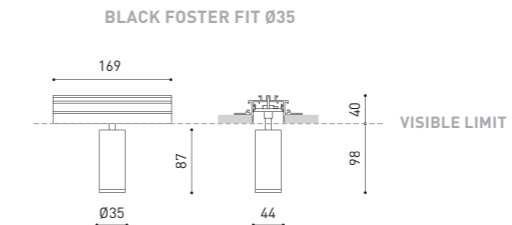
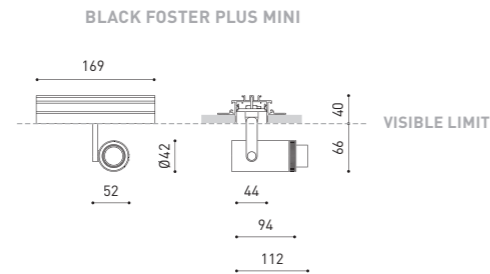
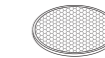
0- *OPTIONS

1	No DIM
2	DIM DALI

ACCESSORY

FIT Ø35 Anti-glare Honeycomb Louver ** A345-00-00

NOT SOLD SEPARATELY



COLOUR | WT RAL 9016 | NT RAL 9005 | MATERIAL | AL | OPTICAL PMMA | ABS+PC

** ACCESSORY AFFECTS THE LIGHTING PARAMETERS
RECOMMENDED FOR INSTALLATIONS WHERE THE PROFILE CAN BE INSTALLED BEFORE THE FALSE PLASTERBOARD CEILING (THICKNESS 12,5mm.)



COLOUR | WT RAL 9016 | NT RAL 9005 | MATERIAL | AL | PC | ABS+PC

** ACCESSORY AFFECTS THE LIGHTING PARAMETERS
RECOMMENDED FOR INSTALLATIONS WHERE THE PROFILE CAN BE INSTALLED BEFORE THE FALSE PLASTERBOARD CEILING (THICKNESS 12,5mm.)





El sistema Black Foster Custom amplía sus posibilidades con los nuevos proyectores Plus Mini, Six S y Fit 35.

Además de los citados focos, Fit 20 Double, Fit 20, iO, Six M, Six XS y Six XS Double, para el sistema Black Foster Custom, están disponibles bajo demanda.



		P	CCT	BEAM	I	Flux	LOR
BLACK FOSTER SIX S	A360-0- Ⓞ -10- WT NT	8,5W	2700K	17°	500mA	1030Lm	86%
	A360-0- Ⓞ -11- WT NT	8,5W	3000K	17°	500mA	1070Lm	86%
	A360-0- Ⓞ -12- WT NT	8,5W	4000K	17°	500mA	1100Lm	86%
	A360-0- Ⓞ -20- WT NT	8,5W	2700K	24°	500mA	1030Lm	84%
	A360-0- Ⓞ -21- WT NT	8,5W	3000K	24°	500mA	1070Lm	84%
	A360-0- Ⓞ -22- WT NT	8,5W	4000K	24°	500mA	1100Lm	84%
	A360-0- Ⓞ -30- WT NT	8,5W	2700K	34°	500mA	1030Lm	89%
	A360-0- Ⓞ -31- WT NT	8,5W	3000K	34°	500mA	1070Lm	89%
	A360-0- Ⓞ -32- WT NT	8,5W	4000K	34°	500mA	1100Lm	89%

LED | 220/240 V~ | **CE** | IP20 | CRI>90 | L80B10 >60.000h
 MacAdam Step 2
OPTIONS*
INCL
350°
310°
17°/24°/34°

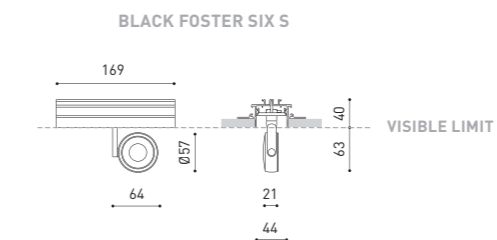
Ⓞ *OPTIONS

1	No DIM
2	DIM DALI

ACCESSORY

SIX S High Chromatic LED**

NOT SOLD SEPARATELY



COLOUR | WT RAL 9016 | NT RAL 9005 | MATERIAL | AL | PC | ABS+PC |

** ACCESSORY & COLOURS AFFECT THE LIGHTING PARAMETERS
RECOMMENDED FOR INSTALLATIONS WHERE THE PROFILE CAN BE INSTALLED BEFORE THE FALSE PLASTERBOARD CEILING (THICKNESS 12,5mm.)





BLACK FOSTER

NOW ASYMMETRIC

Black Foster se ofrece ahora con emisión de luz asimétrica en sus variantes 'Recessed', 'Trimless' y 'Custom'.





Ⓞ	*OPTIONS
1	No DIM
2	DIM Push
3	DIM 1-10V
4	DIM DALI

BLACK FOSTER ASYMMETRIC RECESSED

		P	CCT	I	Flux	LOR
BLACK FOSTER ASYMMETRIC Recessed 2	A374-20- Ⓞ -0- N WN	4,2W	2700K	700mA	380Lm	90%
	A374-20- Ⓞ -1- N WN	4,2W	3000K	700mA	420Lm	90%
	A374-20- Ⓞ -2- N WN	4,2W	4000K	700mA	500Lm	90%

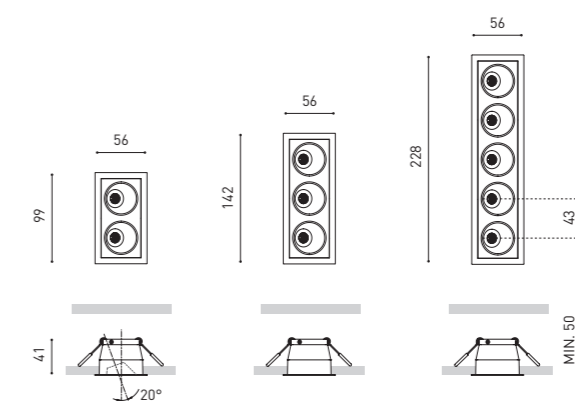
LED | 220 V~ | CE | IP20 | CRI>90 | L80B10 >60.000h |
 MacAdam Step 3 | OPTIONS* | CONNEX | INCL | 50 X 93 | 38°

		P	CCT	I	Flux	LOR
BLACK FOSTER ASYMMETRIC Recessed 3	A374-30- Ⓞ -0- N WN	6,3W	2700K	700mA	570Lm	90%
	A374-30- Ⓞ -1- N WN	6,3W	3000K	700mA	630Lm	90%
	A374-30- Ⓞ -2- N WN	6,3W	4000K	700mA	750Lm	90%

LED | 220 V~ | CE | IP20 | CRI>90 | L80B10 >60.000h |
 MacAdam Step 3 | OPTIONS* | CONNEX | INCL | 50 X 136 | 38°

		P	CCT	I	Flux	LOR
BLACK FOSTER ASYMMETRIC Recessed 5	A374-40- Ⓞ -0- N WN	10,5W	2700K	700mA	950Lm	90%
	A374-40- Ⓞ -1- N WN	10,5W	3000K	700mA	1050Lm	90%
	A374-40- Ⓞ -2- N WN	10,5W	4000K	700mA	1250Lm	90%

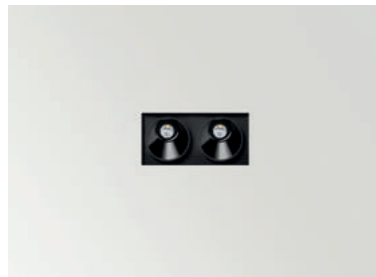
LED | 220 V~ | CE | IP20 | CRI>90 | L80B10 >60.000h |
 MacAdam Step 3 | OPTIONS* | CONNEX | INCL | 50 X 222 | 38°



COLOUR | N ■ RAL 9005 | WN ■ RAL 9016 | RAL 9005 | MATERIAL | AL | ABS+PC |

» PLEASE CONSULT

BLACK FOSTER ASYMMETRIC TRIMLESS



		P	CCT	I	Flux	LOR
BLACK FOSTER ASYMMETRIC Trimless 2	A373-20- ② -0- N	4,2W	2700K	700mA	380Lm	90%
	A373-20- ② -1- N	4,2W	3000K	700mA	420Lm	90%
	A373-20- ② -2- N	4,2W	4000K	700mA	500Lm	90%

LED | 220 V~ | 240 | CE | IP20 | CRI>90 | L80B10 >60.000h | MacAdam Step 3 | OPTIONS* | CONNEC | INCL | 50 X 93 | 38°



		P	CCT	I	Flux	LOR
BLACK FOSTER ASYMMETRIC Trimless 3	A373-30- ② -0- N	6,3W	2700K	700mA	570Lm	90%
	A373-30- ② -1- N	6,3W	3000K	700mA	630Lm	90%
	A373-30- ② -2- N	6,3W	4000K	700mA	750Lm	90%

LED | 220 V~ | 240 | CE | IP20 | CRI>90 | L80B10 >60.000h | MacAdam Step 3 | OPTIONS* | CONNEC | INCL | 50 X 136 | 38°



		P	CCT	I	Flux	LOR
BLACK FOSTER ASYMMETRIC Trimless 5	A373-40- ② -0- N	10,5W	2700K	700mA	950Lm	90%
	A373-40- ② -1- N	10,5W	3000K	700mA	1050Lm	90%
	A373-40- ② -2- N	10,5W	4000K	700mA	1250Lm	90%

LED | 220 V~ | 240 | CE | IP20 | CRI>90 | L80B10 >60.000h | MacAdam Step 3 | OPTIONS* | CONNEC | INCL | 50 X 222 | 38°

②	*OPTIONS
1	No DIM
2	DIM Push
3	DIM 1-10V
4	DIM DALI

COLOUR | N ■ RAL 9005 | MATERIAL | AL | ABS+PC |

RECOMMENDED FOR INSTALLATIONS WHERE THE PROFILE CAN BE INSTALLED BEFORE THE FALSE PLASTERBOARD CEILING (THICKNESS 12,5mm.)



		P	CCT	I	Flux	LOR
BLACK FOSTER ASYMMETRIC Trimless 10	A373-50- ② -0- N	21W	2700K	700mA	1900Lm	90%
	A373-50- ② -1- N	21W	3000K	700mA	2100Lm	90%
	A373-50- ② -2- N	21W	4000K	700mA	2500Lm	90%

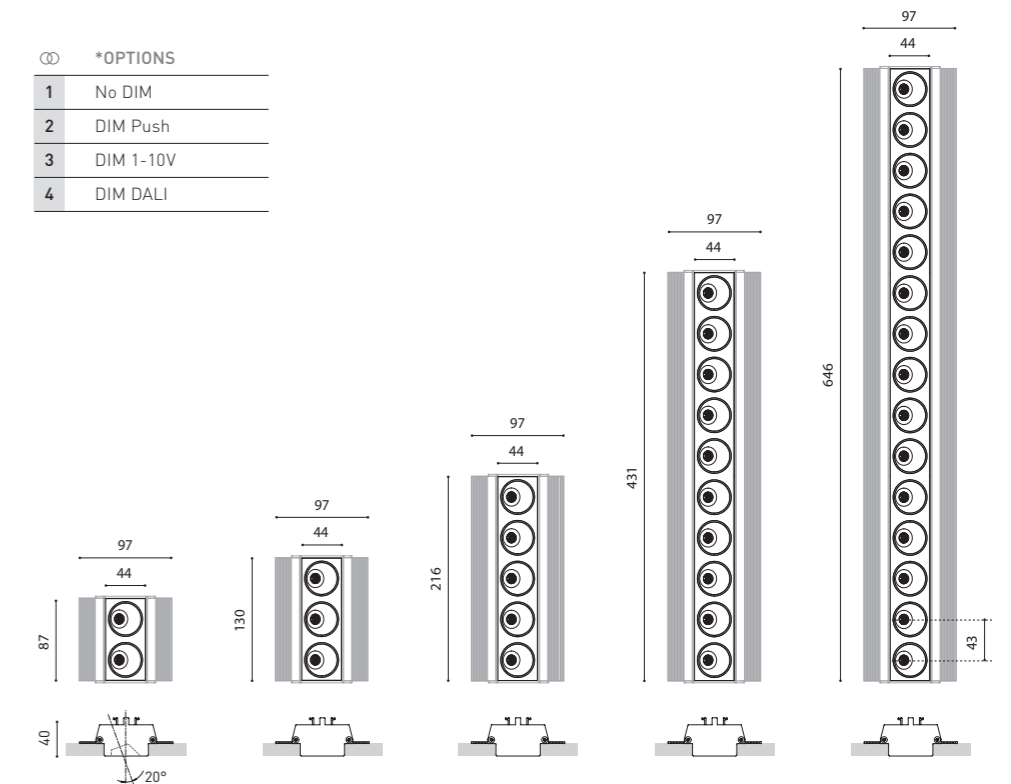
LED | 220 V~ | 240 | CE | IP20 | CRI>90 | L80B10 >60.000h | MacAdam Step 3 | OPTIONS* | CONNEC | INCL | 50 X 437 | 38°



		P	CCT	I	Flux	LOR
BLACK FOSTER ASYMMETRIC Trimless 15	A373-60- ② -0- N	31,5W	2700K	700mA	2850Lm	90%
	A373-60- ② -1- N	31,5W	3000K	700mA	3150Lm	90%
	A373-60- ② -2- N	31,5W	4000K	700mA	3750Lm	90%

LED | 220 V~ | 240 | CE | IP20 | CRI>90 | L80B10 >60.000h | MacAdam Step 3 | OPTIONS* | CONNEC | INCL | 50 X 652 | 38°

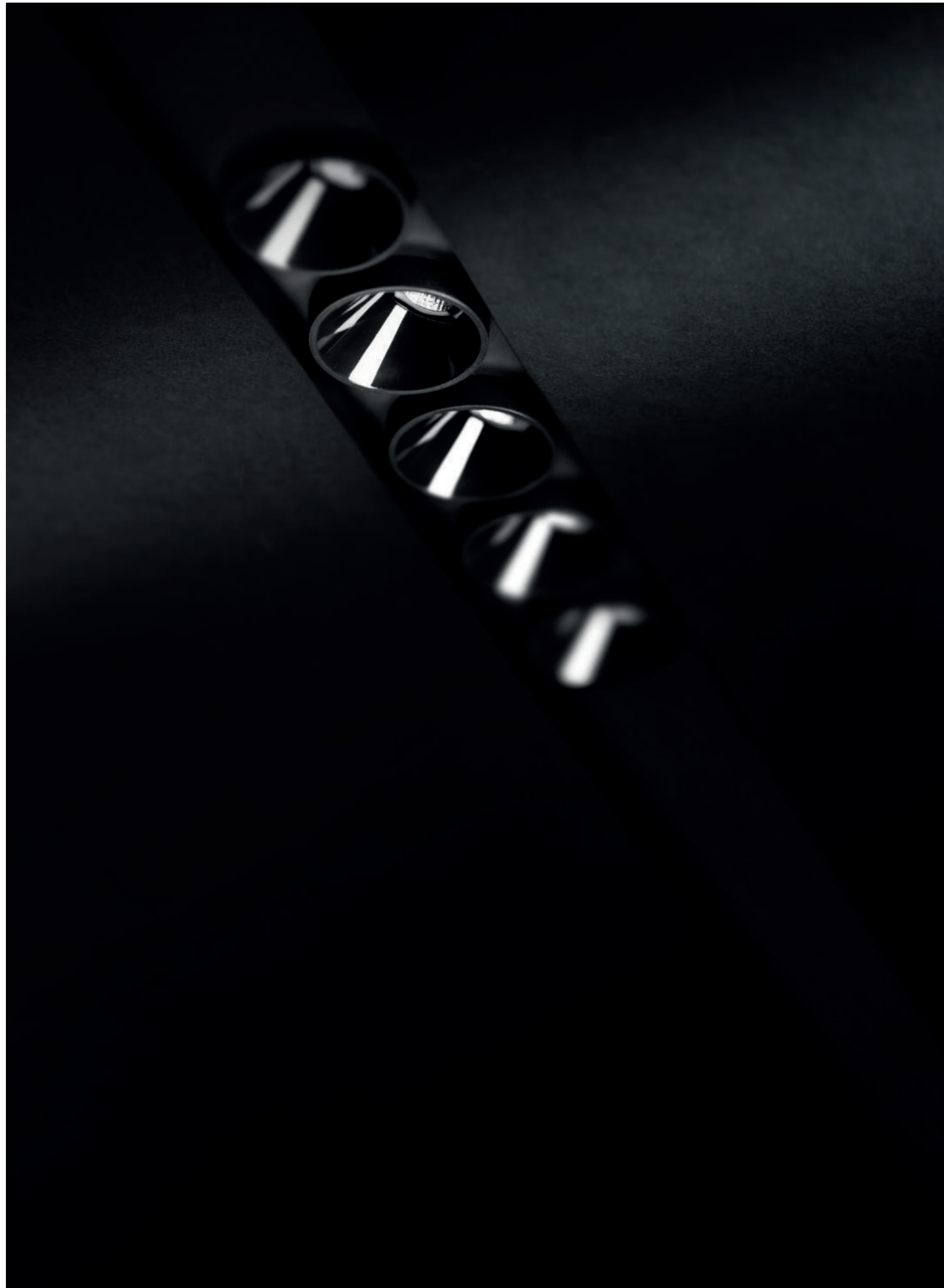
②	*OPTIONS
1	No DIM
2	DIM Push
3	DIM 1-10V
4	DIM DALI



COLOUR | N ■ RAL 9005 | MATERIAL | AL | ABS+PC |

RECOMMENDED FOR INSTALLATIONS WHERE THE PROFILE CAN BE INSTALLED BEFORE THE FALSE PLASTERBOARD CEILING (THICKNESS 12,5mm.)



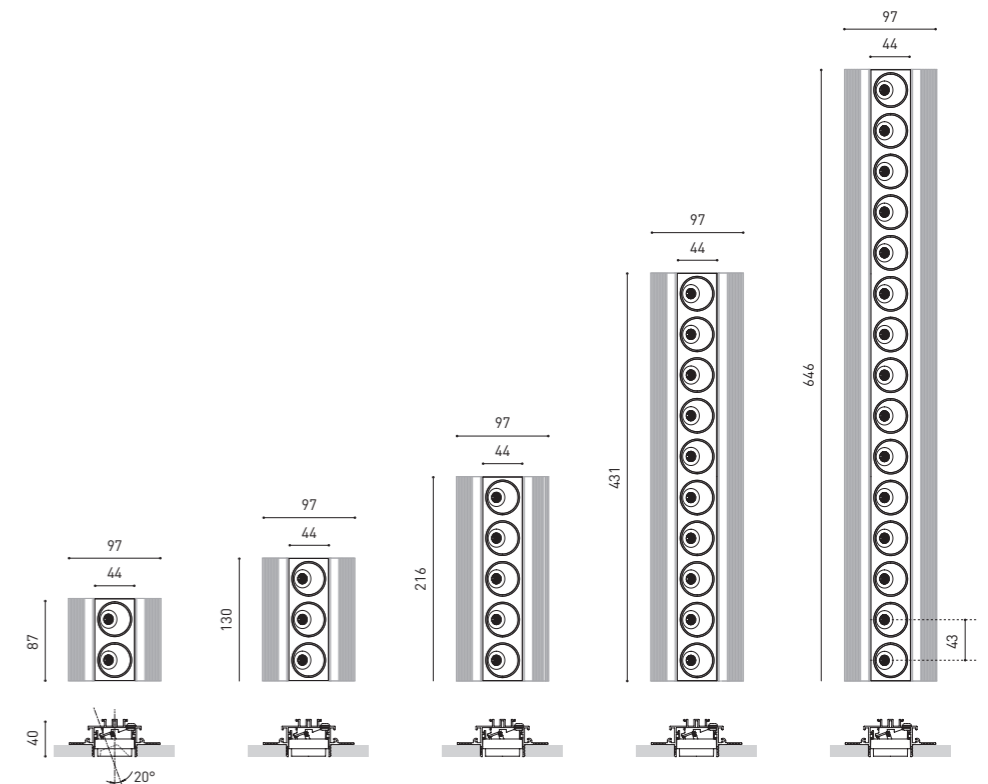


BLACK FOSTER ASYMMETRIC CUSTOM

		P	CCT	I	Flux	LOR	L
BLACK FOSTER ASYMMETRIC Custom 2	A372-20-00- N	4,2W	2700K	700mA	380Lm	90%	87mm
	A372-20-01- N	4,2W	3000K	700mA	420Lm	90%	87mm
	A372-20-02- N	4,2W	4000K	700mA	500Lm	90%	87mm
BLACK FOSTER ASYMMETRIC Custom 3	A372-30-00- N	6,3W	2700K	700mA	570Lm	90%	130mm
	A372-30-01- N	6,3W	3000K	700mA	630Lm	90%	130mm
	A372-30-02- N	6,3W	4000K	700mA	750Lm	90%	130mm
BLACK FOSTER ASYMMETRIC Custom 5	A372-40-00- N	10,5W	2700K	700mA	950Lm	90%	216mm
	A372-40-01- N	10,5W	3000K	700mA	1050Lm	90%	216mm
	A372-40-02- N	10,5W	4000K	700mA	1250Lm	90%	216mm
BLACK FOSTER ASYMMETRIC Custom 10	A372-50-00- N	21W	2700K	700mA	1900Lm	90%	431mm
	A372-50-01- N	21W	3000K	700mA	2100Lm	90%	431mm
	A372-50-02- N	21W	4000K	700mA	2500Lm	90%	431mm
BLACK FOSTER ASYMMETRIC Custom 15	A372-60-00- N	31,5W	2700K	700mA	2850Lm	90%	646mm
	A372-60-01- N	31,5W	3000K	700mA	3150Lm	90%	646mm
	A372-60-02- N	31,5W	4000K	700mA	3750Lm	90%	646mm

LED | CE | III | IP20 | CRI>90 | L80B10 >60.000h

MacAdam Step 3 | OPTIONS | EXCL | 38°



COLOUR | N ■ RAL 9005 | MATERIAL | AL | ABS+PC

PLASTERBOARD CEILING, MANDATORY THICKNESS 12,5mm. RECOMMENDED FOR INSTALLATIONS WHERE THE PROFILE CAN BE INSTALLED BEFORE THE FALSE PLASTERBOARD CEILING.

» PLEASE CONSULT

ART MODULAR

Disponibles bajo demanda, existen tres versiones de *Art Modular* (de 3, 4 y 5 puntos de luz equidistantes). Los puntos intermedios son configurables para poder crear piezas *Direct & Indirect*.

BRASSA DE MAR
RICE CLUB



reddot design award
winner 2019



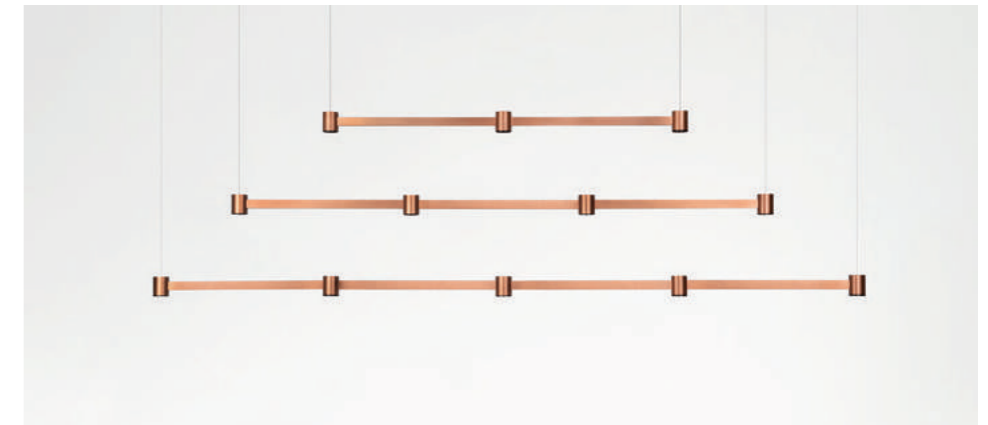
archiproducts
DESIGN AWARDS
WINNER 2019



FX
INTERNATIONAL DESIGN AWARDS
SHORTLIST
2019



PREMIO
ADCV 2019
PLATA



		P	CCT	I	Flux	LOR
ART Modular 3	WT NT BC BG	6,3W	2700K	700mA	570Lm	93%
	WT NT BC BG	6,3W	3000K	700mA	630Lm	93%
	WT NT BC BG	6,3W	2700K	700mA	570Lm	93%
	WT NT BC BG	6,3W	3000K	700mA	630Lm	93%
ART Modular 4	WT NT BC BG	8,4W	2700K	700mA	760Lm	93%
	WT NT BC BG	8,4W	3000K	700mA	840Lm	93%
	WT NT BC BG	8,4W	2700K	700mA	760Lm	93%
	WT NT BC BG	8,4W	3000K	700mA	840Lm	93%
ART Modular 5	WT NT BC BG	10,5W	2700K	700mA	950Lm	93%
	WT NT BC BG	10,5W	3000K	700mA	1050Lm	93%
	WT NT BC BG	10,5W	2700K	700mA	950Lm	93%
	WT NT BC BG	10,5W	3000K	700mA	1050Lm	93%

| 220 V~ | | IP20 | CRI>90 | L80B10 >60.000h

 MacAdam Step 3

 INCL

 2 X Ø50

 UGR <19

 35°

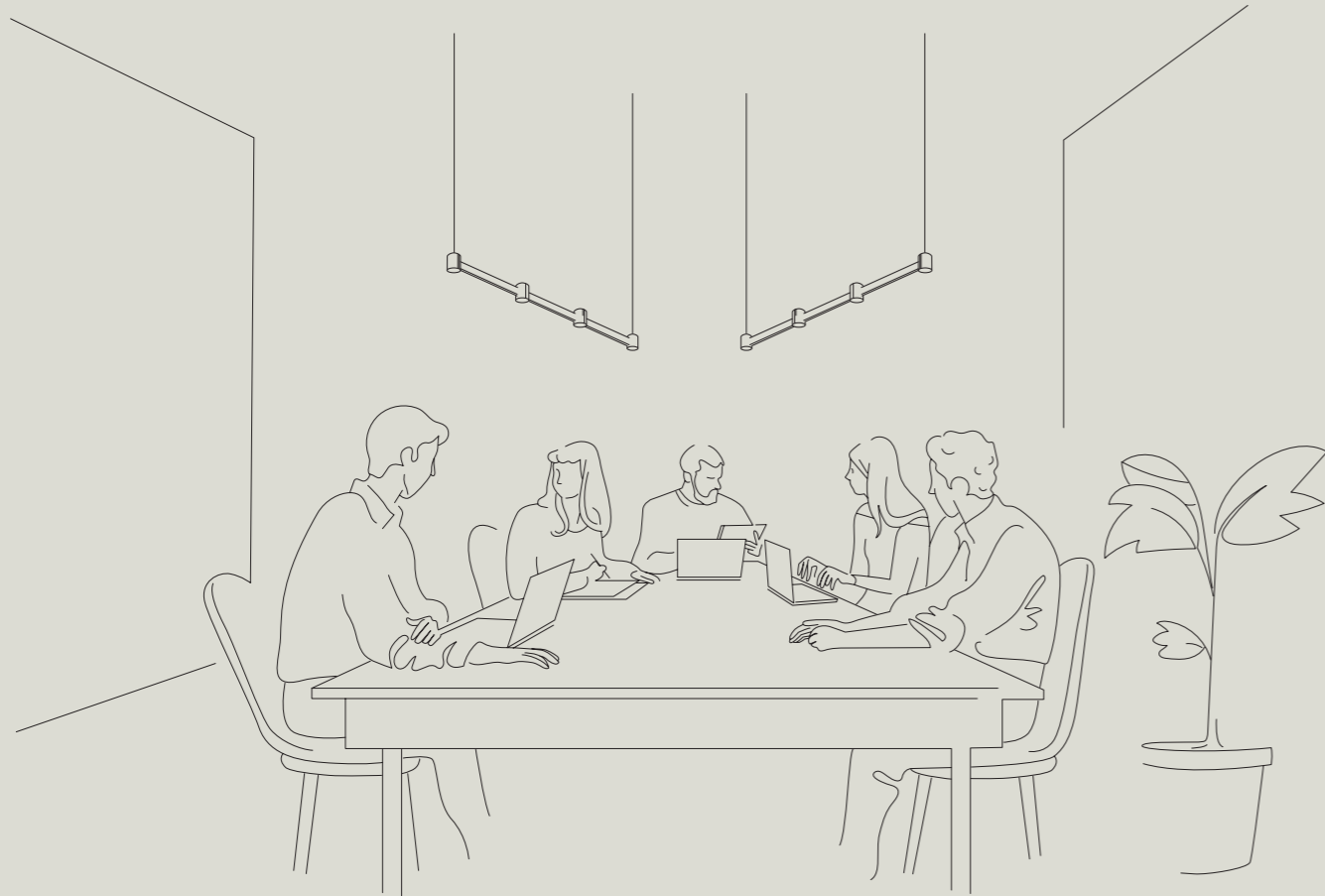
 35°

FINISHING**	Lamp	Base
	WT	WT
	NT	NT
	BC	WT
	BG	WT

COLOUR | WT RAL 9016 | NT RAL 9005 | BC | BG | MATERIAL | BR | ABS+PC |

OTHER CCT | * OTHER DIM OPTIONS | ** OTHER FINISHING COMBINATIONS » PLEASE CONSULT » PLEASE CONSULT

ART MODULAR. SOBREMESA



150 x 90 cm.

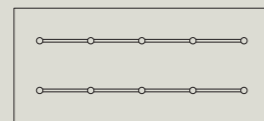


1520 | 1680 Lm

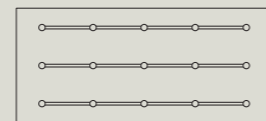


2280 | 2520 Lm

200 x 90 cm.

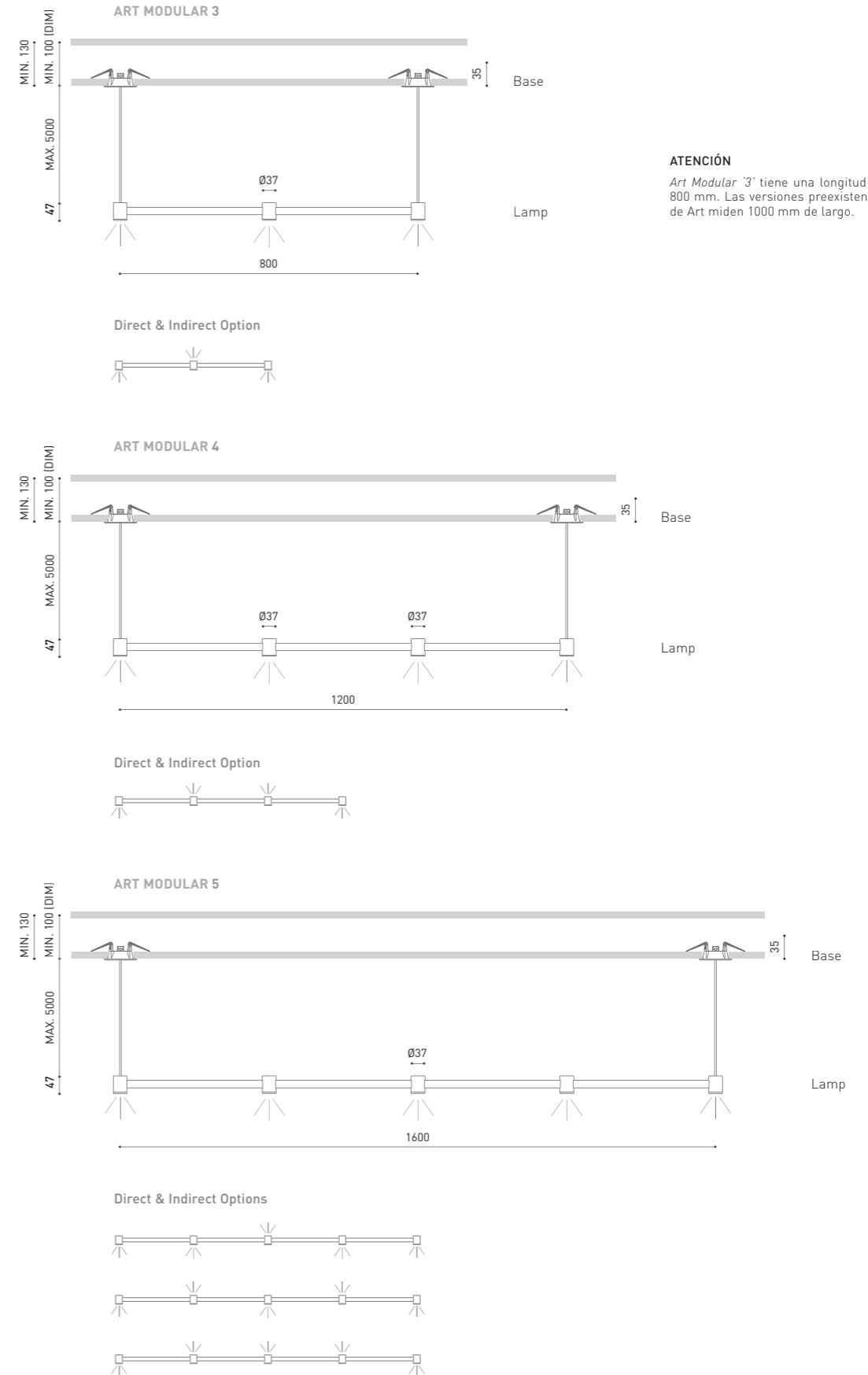


1900 | 2100 Lm



2850 | 3150 Lm

SUGERENCIAS DE DISTRIBUCIÓN DE ART MODULAR PARA MESAS DE MEDIDAS ESTANDAR.



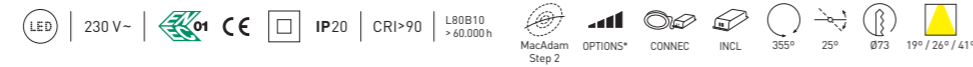


WELLIT

Wellit es una luminaria orientable, con tres tamaños, concebida para aplicaciones de iluminación para retail y contract. Eficiencia, prestaciones técnicas y orden visual.



		P	CCT	BEAM	I	Flux	LOR
WELLIT S1	A380-11-11- WT NT	5W	3000K	19°	150mA	700Lm	80%
	A380-11-12- WT NT	5W	4000K	19°	150mA	710Lm	80%
	A380-11-21- WT NT	5W	3000K	26°	150mA	700Lm	89%
	A380-11-22- WT NT	5W	4000K	26°	150mA	710Lm	89%
	A380-11-31- WT NT	5W	3000K	41°	150mA	700Lm	84%
	A380-11-32- WT NT	5W	4000K	41°	150mA	710Lm	84%
WELLIT S2	A380-2- Ⓞ -11- WT NT	7W	3000K	19°	200mA	940Lm	80%
	A380-2- Ⓞ -12- WT NT	7W	4000K	19°	200mA	960Lm	80%
	A380-2- Ⓞ -21- WT NT	7W	3000K	26°	200mA	940Lm	89%
	A380-2- Ⓞ -22- WT NT	7W	4000K	26°	200mA	960Lm	89%
	A380-2- Ⓞ -31- WT NT	7W	3000K	41°	200mA	940Lm	84%
	A380-2- Ⓞ -32- WT NT	7W	4000K	41°	200mA	960Lm	84%



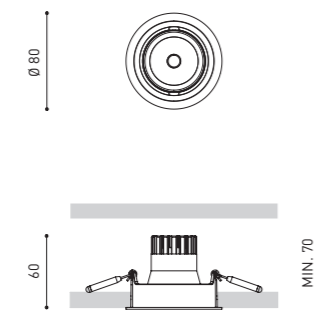
Ⓞ	*OPTIONS
1	No DIM
2	DIM DALI
3	DIM Push

ACCESSORY

WELLIT S Anti-glare Honeycomb Louver ** A380-00-00
NOT SOLD SEPARATELY



WELLIT S



COLOUR | WT □ RAL 9016 | NT ■ RAL 9005 | MATERIAL | AL | PC |

** ACCESSORY AFFECTS THE LIGHTING PARAMETERS



		P	CCT	BEAM	I	Flux	LOR
WELLIT M1	A381-11-11- WT NT	8W	3000K	19°	250mA	1190Lm	81%
	A381-11-12- WT NT	8W	4000K	19°	250mA	1210Lm	81%
	A381-11-21- WT NT	8W	3000K	24°	250mA	1190Lm	83%
	A381-11-22- WT NT	8W	4000K	24°	250mA	1210Lm	83%
	A381-11-31- WT NT	8W	3000K	39°	250mA	1190Lm	83%
	A381-11-32- WT NT	8W	4000K	39°	250mA	1210Lm	83%
WELLIT M2	A381-2- Ⓞ -11- WT NT	15W	3000K	19°	450mA	1970Lm	81%
	A381-2- Ⓞ -12- WT NT	15W	4000K	19°	450mA	2000Lm	81%
	A381-2- Ⓞ -21- WT NT	15W	3000K	24°	450mA	1970Lm	83%
	A381-2- Ⓞ -22- WT NT	15W	4000K	24°	450mA	2000Lm	83%
	A381-2- Ⓞ -31- WT NT	15W	3000K	39°	450mA	1970Lm	83%
	A381-2- Ⓞ -32- WT NT	15W	4000K	39°	450mA	2000Lm	83%



		P	CCT	BEAM	I	Flux	LOR
WELLIT M Tunable White	A381-02-18- WT NT	10,5W	2700-5000K	14°	600mA	1250Lm	83%
	A381-02-28- WT NT	10,5W	2700-5000K	20°	600mA	1250Lm	82%
	A381-02-38- WT NT	10,5W	2700-5000K	34°	600mA	1250Lm	80%



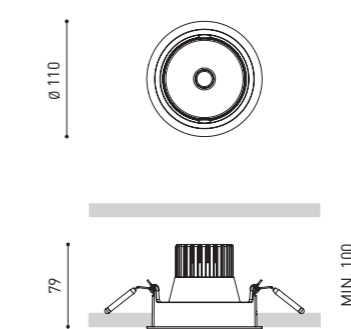
Ⓞ	*OPTIONS
1	No DIM
2	DIM DALI
3	DIM Push

ACCESSORY

WELLIT M Anti-glare Honeycomb Louver *** A381-00-00
NOT SOLD SEPARATELY



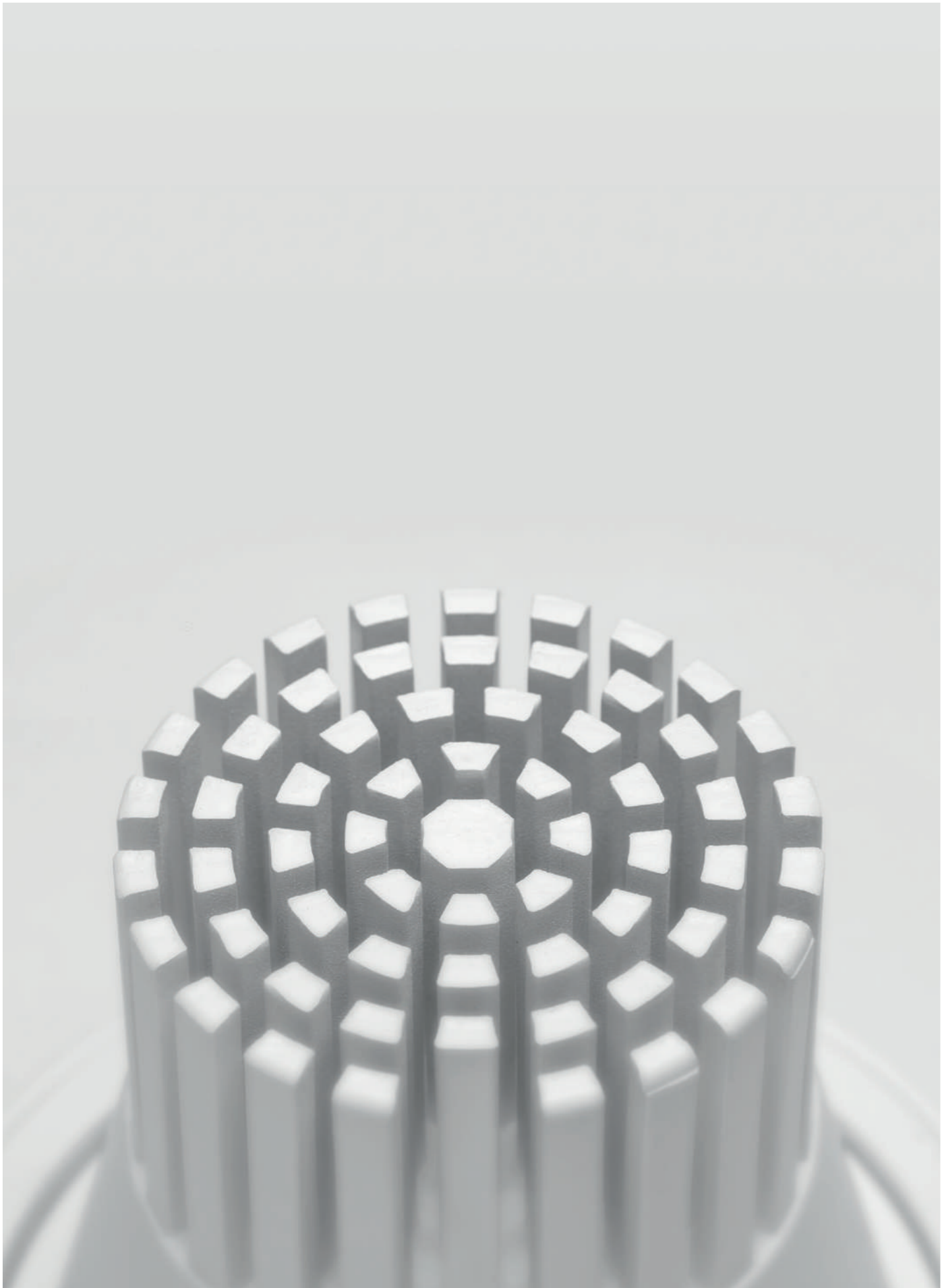
WELLIT M



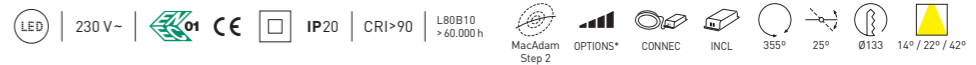
COLOUR | WT □ RAL 9016 | NT ■ RAL 9005 | MATERIAL | AL | PC |

** DIM OPTIONS PLEASE CONSULT | *** ACCESSORY AFFECTS THE LIGHTING PARAMETERS





			P	CCT	BEAM	I	Flux	LOR
WELLIT L1	A382 -11-11-	WT NT	15W	3000K	14°	450mA	2060Lm	90%
	A382 -11-12-	WT NT	15W	4000K	14°	450mA	2100Lm	90%
	A382 -11-21-	WT NT	15W	3000K	22°	450mA	2060Lm	91%
	A382 -11-22-	WT NT	15W	4000K	22°	450mA	2100Lm	91%
	A382 -11-31-	WT NT	15W	3000K	42°	450mA	2060Lm	91%
	A382 -11-32-	WT NT	15W	4000K	42°	450mA	2100Lm	91%
WELLIT L2	A382 -2- ∞ -11-	WT NT	25W	3000K	14°	700mA	2960Lm	90%
	A382 -2- ∞ -12-	WT NT	25W	4000K	14°	700mA	3000Lm	90%
	A382 -2- ∞ -21-	WT NT	25W	3000K	22°	700mA	2960Lm	91%
	A382 -2- ∞ -22-	WT NT	25W	4000K	22°	700mA	3000Lm	91%
	A382 -2- ∞ -31-	WT NT	25W	3000K	42°	700mA	2960Lm	91%
	A382 -2- ∞ -32-	WT NT	25W	4000K	42°	700mA	3000Lm	91%



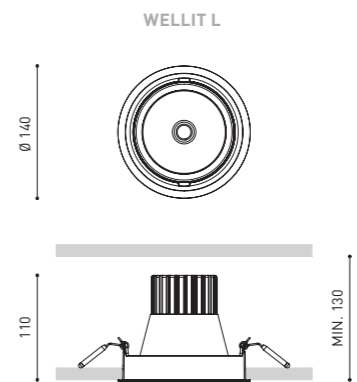
			P	CCT	BEAM	I	Flux	LOR
WELLIT L Tunable White	A382-02-18-	WT NT	21,5W	2700-5000K	12°	600mA	2300Lm	89%
	A382-02-28-	WT NT	21,5W	2700-5000K	21°	600mA	2300Lm	84%
	A382-02-38-	WT NT	21,5W	2700-5000K	43°	600mA	2300Lm	87%



∞	*OPTIONS
1	No DIM
2	DIM DALI
3	DIM Push

ACCESSORY

WELLIT L Anti-glare Honeycomb Louver *** A382-00-00
NOT SOLD SEPARATELY



COLOUR | WT □ RAL 9016 | NT ■ RAL 9005 | MATERIAL | AL | PC |

** DIM OPTIONS PLEASE CONSULT | *** ACCESSORY AFFECTS THE LIGHTING PARAMETERS

LEX ECO MINI

Lex Eco Mini es la versión de tamaño reducido de Lex Eco. Coherente en sus proporciones, potencia y flujo es una luminaria versátil y polivalente, adecuada tanto para proyectos domésticos como contract.



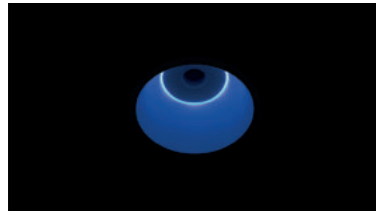
DESIGN PLUS
2012 AWARD



Premios
Delta'12
Δ
Selección



LEX ECO MINI & LEX ECO MINI BLUE ON



LEX ECO MINI BLUE OFF

			P	CCT	I	Flux	LOR
LEX ECO MINI 1	A378-01-10-	W R G Z WN N	6,5W	2700K	200mA	910Lm	70%
	A378-01-11-	W R G Z WN N	6,5W	3000K	200mA	940Lm	70%
	A378-01-12-	W R G Z WN N	6,5W	4000K	200mA	960Lm	70%
LEX ECO MINI Blue 1	A378-11-10-	W	6,5W	2700K	200mA	910Lm	70%
	A378-11-11-	W	6,5W	3000K	200mA	940Lm	70%
	A378-11-12-	W	6,5W	4000K	200mA	960Lm	70%
LEX ECO MINI 2	A378-02- ① -0-	W R G Z WN N	12W	2700K	350mA	1400Lm	70%
	A378-02- ① -1-	W R G Z WN N	12W	3000K	350mA	1460Lm	70%
	A378-02- ① -2-	W R G Z WN N	12W	4000K	350mA	1480Lm	70%
LEX ECO MINI Blue 2	A378-12- ① -0-	W	12W	2700K	350mA	1400Lm	70%
	A378-12- ① -1-	W	12W	3000K	350mA	1460Lm	70%
	A378-12- ① -2-	W	12W	4000K	350mA	1480Lm	70%

LED | 220-240 V~ | CE | IP20 | CRI>90 | L80B10 >60.000h



①	*OPTIONS
1	No DIM
2	DIM DALI
3	DIM Push

ACCESSORY

LEX ECO High Chromatic LED **

NOT SOLD SEPARATELY



			P	CCT	I	Flux	LOR
LEX ECO MINI Tunable White	A378-00-28-	W R G Z WN N	10,5W	2700-5000K	600mA	1250Lm	70%
LEX ECO MINI Blue Tunable White	A378-10-28-	W	10,5W	2700-5000K	600mA	1250Lm	70%

LED | 220-240 V~ | CE | IP20 | CRI>90 | L80B10 >55.000h

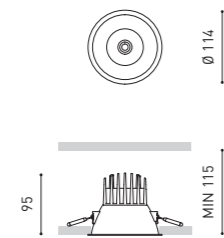


			P	CCT	I	Flux	LOR
LEX ECO MINI DIM to Warm	A378-00-29-	W R G Z WN N	11,5W	1800-3000K	350mA	1265Lm	70%
LEX ECO MINI Blue DIM to Warm	A378-10-29-	W	11,5W	1800-3000K	350mA	1265Lm	70%

LED | 220-240 V~ | CE | IP20 | CRI>90 | L80B10 >55.000h



LEX ECO MINI

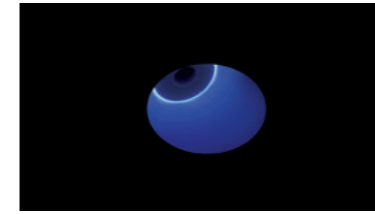


COLOUR | W | R | G | Z | WN | N | MATERIAL | AL | PC |

* OTHER DIM OPTIONS PLEASE CONSULT
** ACCESSORY & COLOURS MAY AFFECT THE LIGHTING PARAMETERS



LEX ECO MINI ASYMMETRIC & MINI ASYMMETRIC BLUE ON



LEX ECO MINI ASYMMETRIC BLUE OFF

			P	CCT	I	Flux	LOR
LEX ECO MINI Asymmetric 1	A379-01-10-	W R G Z WN N	6,5W	2700K	200mA	910Lm	70%
	A379-01-11-	W R G Z WN N	6,5W	3000K	200mA	940Lm	70%
	A379-01-12-	W R G Z WN N	6,5W	4000K	200mA	960Lm	70%
LEX ECO MINI Asymmetric Blue 1	A379-11-10-	W	6,5W	2700K	200mA	910Lm	70%
	A379-11-11-	W	6,5W	3000K	200mA	940Lm	70%
	A379-11-12-	W	6,5W	4000K	200mA	960Lm	70%
LEX ECO MINI Asymmetric 2	A379-02- ① -0-	W R G Z WN N	12W	2700K	350mA	1400Lm	70%
	A379-02- ① -1-	W R G Z WN N	12W	3000K	350mA	1460Lm	70%
	A379-02- ① -2-	W R G Z WN N	12W	4000K	350mA	1480Lm	70%
LEX ECO MINI Asymmetric Blue 2	A379-12- ① -0-	W	12W	2700K	350mA	1400Lm	70%
	A379-12- ① -1-	W	12W	3000K	350mA	1460Lm	70%
	A379-12- ① -2-	W	12W	4000K	350mA	1480Lm	70%

LED | 220-240 V~ | CE | IP20 | CRI>90 | L80B10 >60.000h



①	*OPTIONS
1	No DIM
2	DIM DALI
3	DIM Push

ACCESSORY

LEX ECO High Chromatic LED **

NOT SOLD SEPARATELY



			P	CCT	I	Flux	LOR
LEX ECO MINI Asymmetric Tunable White	A379-00-28-	W R G Z WN N	10,5W	2700-5000K	600mA	1250Lm	70%
LEX ECO MINI Asymmetric Blue Tunable White	A379-10-28-	W	10,5W	2700-5000K	600mA	1250Lm	70%

LED | 220-240 V~ | CE | IP20 | CRI>90 | L80B10 >55.000h

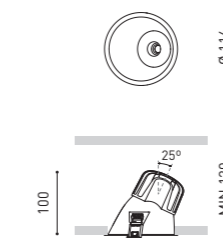


			P	CCT	I	Flux	LOR
LEX ECO MINI Asymmetric DIM to Warm	A379-00-29-	W R G Z WN N	11,5W	1800-3000K	350mA	1265Lm	70%
LEX ECO MINI Asymmetric Blue DIM to Warm	A379-10-29-	W	11,5W	1800-3000K	350mA	1265Lm	70%

LED | 220-240 V~ | CE | IP20 | CRI>90 | L80B10 >55.000h



LEX ECO MINI ASYMMETRIC



COLOUR | W | R | G | Z | WN | N | MATERIAL | AL | PC |

* OTHER DIM OPTIONS PLEASE CONSULT
** ACCESSORY & COLOURS MAY AFFECT THE LIGHTING PARAMETERS



STRAM SURFACE MINI

Stram Surface dispone ahora de una versión en tamaño mini para proyectos donde las necesidades lumínicas son menores y su tamaño se adapta en consonancia.



				P	CCT	I	Flux	LOR
STRAM SURFACE MINI 2	A377-02-10-	WT	NT	7W	2700K	500mA	975Lm	80%
	A377-02-11-	WT	NT	7W	3000K	500mA	1050Lm	80%
	A377-02-12-	WT	NT	7W	4000K	500mA	1075Lm	80%
STRAM SURFACE MINI 3	A377-03-Ⓞ-0-	WT	NT	10W	2700K	700mA	1275Lm	80%
	A377-03-Ⓞ-1-	WT	NT	10W	3000K	700mA	1375Lm	80%
	A377-03-Ⓞ-2-	WT	NT	10W	4000K	700mA	1400Lm	80%

LED | 220-240 V~ | CE | IP20 | CRI>90 | L80B10 >60.000h

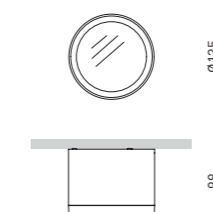


Ⓞ *OPTIONS

1	No DIM
5	DIM Phase Cut



STRAM SURFACE MINI



COLOUR | WT □ RAL 9016 | NT ■ RAL 9005 | MATERIAL | AL | PMMA |

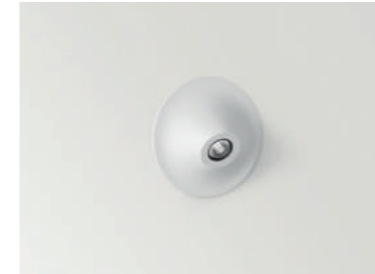
PRISMATIC DIFFUSER PLEASE CONSULT

» PLEASE CONSULT

RHINO

Rinho es un bañador de suelo semi-empotrado, de emisión de luz directa, que sobresale de la pared de manera que refiere, imaginariamente, a una presión desde el interior del muro.





				P	CCT	I	Flux	LOR
RHINO	A351-00-10-	WT	NT	2W	2700K	700mA	190Lm	90%
	A351-00-11-	WT	NT	2W	3000K	700mA	205Lm	90%

LED | 220V~ | CE | IP20 | CRI>90 | L80B10 >60.000h

MacAdam Step 3
INCL
Ø79
35°
35°

				P	CCT	Flux	LOR
RHINO w/o Driver	A351-00-00-	WT	NT	1 / 2 / 3W	2700K	105 / 190 / 255Lm	90%
	A351-00-01-	WT	NT	1 / 2 / 3W	3000K	115 / 205 / 280Lm	90%

LED | CE | III | IP20 | CRI>90 | L80B10 >60.000h

MacAdam Step 3
EXCL*
Ø79
35°
35°

*DRIVER OPTIONS

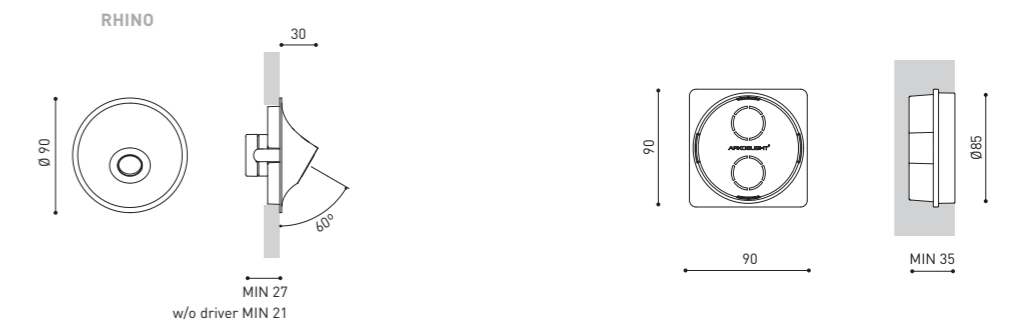
	P	I
0434-00-39	1W	350mA 1 to 12 Rhino
0434-00-40	2W	700mA 1 to 12 Rhino
0434-00-41	3W	1050mA 1 to 11 Rhino
0434-01-23	1W	350mA 1 to 20 Rhino
0434-01-25	2W	700mA 1 to 20 Rhino
0434-01-26	3W	1050mA 1 to 16 Rhino

DRIVER MUST BE PLACED ON REMOTE

ACCESSORY

RHINO Concrete Box Accessory A351-90-00

Only needed when installed in concrete walls. Boxes can be ordered in advance, in order to place the housings in the wall before the final Rhino installation.

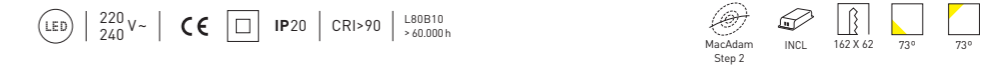


COLOUR | WT RAL 9016 | NT RAL 9005 | MATERIAL | AL | PC |

» PLEASE CONSULT



		P	CCT	I	Flux	LOR
WALLY	A353-00-10- W N	2,1W	2700K	250mA	260Lm	23%
	A353-00-11- W N	2,1W	3000K	250mA	270Lm	23%
	A353-00-12- W N	2,1W	4000K	250mA	290Lm	23%



		P	CCT	Flux	LOR
WALLY w/o Driver	A353-00-00- W N	2,1 / 3W	2700K	260 / 350Lm	23%
	A353-00-01- W N	2,1 / 3W	3000K	270 / 360Lm	23%
	A353-00-02- W N	2,1 / 3W	4000K	290 / 390Lm	23%



		P	I	
*DRIVER OPTIONS				
	0434-01-30	2,1W	250mA	1 to 3 Wally
	0486-04-35	3W	350mA	1 Wally
NO DIM	0434-00-39	3W	350mA	1 to 4 Wally
	0434-01-29	2,1W	250mA	1 to 3 Wally
DALI	0434-00-79	3W	350mA	1 to 4 Wally

DRIVER MUST BE PLACED ON REMOTE

ACCESSORY

WALLY Concrete Box Accessory A353-90-00

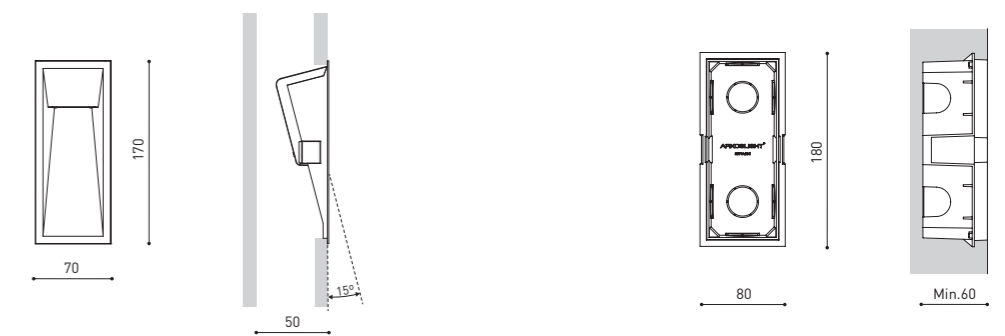
Only needed when installed in concrete walls.
Boxes can be ordered in advance, in order to place the housings in the wall before the final Wally installation.



WALLY

Wally es un bañador de suelo de formas geométricas y estética arquitectural. Sobriedad, minimalismo formal y homogeneidad lumínica.

WALLY



COLOUR | W □ RAL 9016 | N ■ RAL 9005 | MATERIAL | AL | PC

COLOURS MAY AFFECT THE LIGHTING PARAMETERS

» PLEASE CONSULT

UP_ DATES

HEREUNDER...



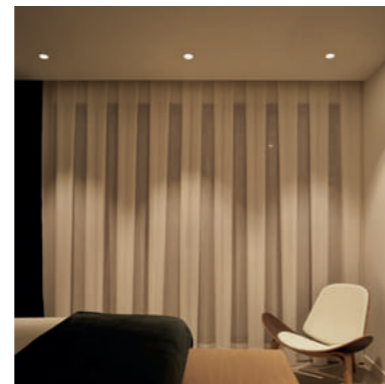
P. 082

New Colors
Nuevos acabados metálicos.



P. 092

Nuevo Puck Recessed IP
Con un índice de protección IP54.



P. 094

Swap ¿más opciones de regulación?
Y, ahora, apto para techos de cemento.



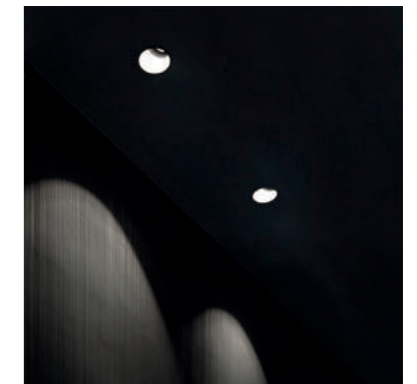
P. 096

Rec Mini, ahora dimmable DALI
Para un control más avanzado.



P. 098

Luz cálida
2700K en gama downlights.



P. 100

Lex Eco aún más técnico
Tecnología Dim to Warm y Tunable White.



P. 102

Spin
Nuevos sensores en color.



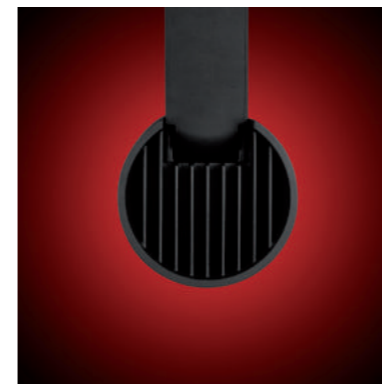
P. 103

Salt Mini
Nuevo sistema de sujeción.



P. 104

Fit 65 1L
Disponible para carriles monofásicos.



P. 106

Thor
Nuevas proporciones.

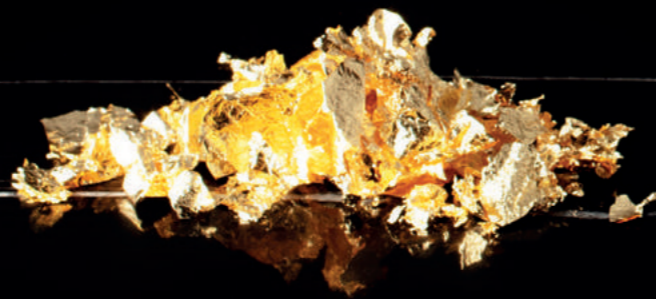


P. 108

ARK-Control
La luz, bajo su completo dominio.

NUEVOS COLORES

Arkoslight incorpora a su catálogo de colores y acabados las terminaciones en Cobre Metalizado, Oro Metalizado y Oro Cepillado. Estos nuevos colores aportan una mayor calidad percibida y transmiten solidez, lujo, calidez y confort.





DISPONIBLES EN LOS PRODUCTOS



BLACK FOSTER
NMG | NTMG | WTMG



SHOT LIGHT
NMG | WMG*



PUCK
MG | MC



SPIN
MG | MC



ART
BG



HOLLY
MG | MC

New Colors

CODE Generator Example - Black Foster

Reference from *The 2019 Collection*

A319 10 10 XX

NEW FINISHINGS

- NMG:** Black Metallic Gold
- NTMG:** Textured Black Metallic Gold
- WTMG:** Textured White Metallic Gold

NEW FINISHINGS

- BG:** Brushed Gold
- MG:** Metallic Gold
- MC:** Metallic Copper
- NTMG:** Textured Black Metallic Gold
- WTMG:** Textured White Metallic Gold
- NMG:** Black Metallic Gold
- WMG:** White Metallic Gold*

* Not available in trimless version





ASH London (United Kingdom) | Design: Francesc Ribé Studio | Photography: David Zarzoso



Black Foster Recessed
CODE Generator Example

Reference from *The 2019 Collection*

A319 10 10 X

NEW BEZEL
N: Black
WN: White-Black

BLACK FOSTER

BISEL BLANCO

Black Foster Recessed, simétrico y asimétrico, está disponible ahora con bisel blanco.



NEW

PUCK RECESSED IP

Puck Recessed es ahora resistente a la penetración de líquidos y partículas sólidas con un índice de protección IP54.

Puck Recessed IP
CODE Generator Example

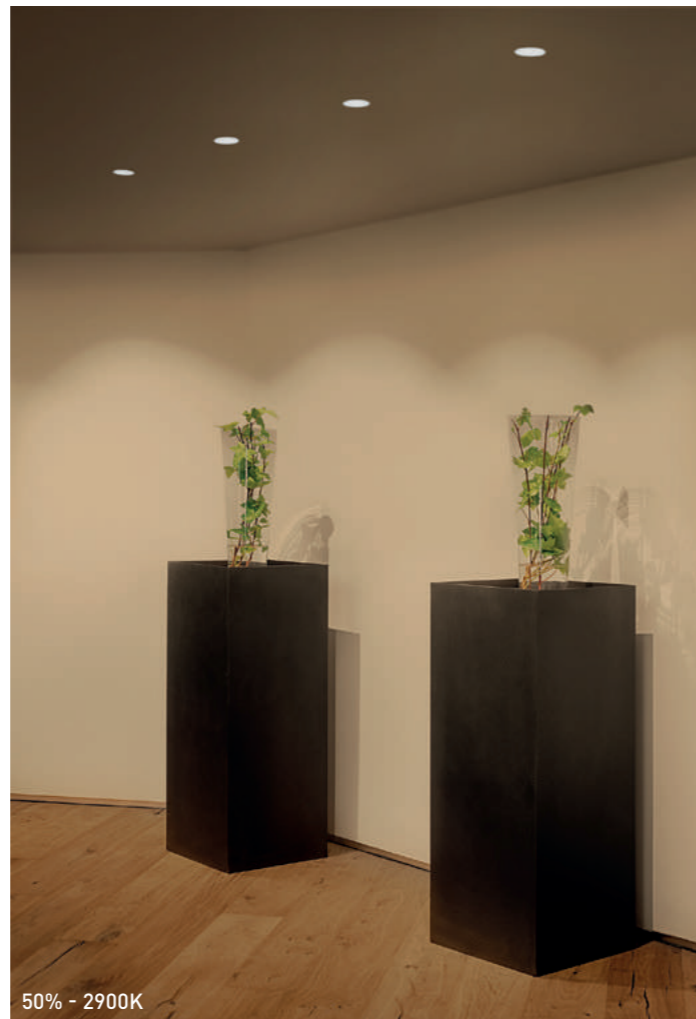
Reference from *The 2019 Collection*

A31X 00 10 WT

PRODUCT

3: PUCK Recessed

4: PUCK Recessed IP54



Swap DIM to WARM
CODE Generator Example

Reference from *The 2019 Collection*

A212 13 X9 W

DIM OPTIONS
2: Phase Cut
3: DALI | Push

SWAP

AHORA, APTO PARA TECHOS DE CEMENTO Y CON NUEVAS OPCIONES DE REGULACIÓN PARA DIM TO WARM.

Todos los Swap Dim to Warm están ahora disponibles con regulación por recorte de fase. Además, Swap puede solicitarse con el nuevo accesorio Flat Spring, para instalarse en techos de cemento (en las tallas M, L y XL).

Accessory
for concrete ceilings



SWAP Flat Spring Accessory

A212-00-00

FLAT SPRING NOT PRE-ASSEMBLED.
ISSUED ALONGSIDE THE FIXTURE, IN A SELF-INSTALLATION KIT.



REC MINI

AHORA DIMMABLE DALI

Rec Mini está ahora disponible en un nuevo protocolo de regulación (DALI), para un control más avanzado.



Rec Mini
CODE Generator Example

Reference from *The 2019 Collection*

A308 00 X0 WT

DIM OPTIONS

- 1: No DIM
- 2: DALI
- 3: Push



LUZ CÁLIDA

La gama de downlights de Arkoslight se actualiza con una nueva temperatura de color: 2700K.

PRODUCT	MODEL	P	CCT	I	Flux
DEEP	1	10,5W	2700K	350mA	1525Lm
DROP					
STRAM	2	15,5W	2700K	500mA	2100Lm
STRAM Prismatic					
MIX	3	22W	2700K	700mA	2800Lm
FOX					
	1	10,5W	2700K	350mA	1500Lm
	2	15,5W	2700K	500mA	2050Lm
FOX Mini					
	2	7W	2700K	500mA	925Lm
	3	10W	2700K	700mA	1200Lm
DEEP Mini					
DROP Mini	2	7W	2700K	500mA	975Lm
STRAM Mini					
STRAM Mini Prismatic					
MIX Mini	3	10W	2700K	700mA	1275Lm

DIM Options: 1: No DIM · 2: DIM Push · 3: DIM 1-10V · 4: DIM DALI

PRODUCT	MODEL	P	CCT	I	Flux
STRAM SURFACE	1	10,5W	2700K	350mA	1525Lm
	2	15,5W	2700K	500mA	2100Lm
	3	22W	2700K	700mA	2800Lm

DIM Options: 1: No DIM · 2: DIM DALI | Push / 1-10V

PRODUCT	MODEL	P	CCT	I	Flux
SALT	3	22W	2700K	700mA	2800Lm

DIM Options: 1: No DIM

PRODUCT	MODEL	P	CCT	I	Flux
SALT Mini	0	10W	2700K	700mA	1300Lm

DIM Options: 1: DIM Phase Cut

Downlights New 2700K
CODE Generator Example - Drop

Reference from *The 2019 Collection*

A193	0X	X0	WT
PRODUCT	MODEL	DIM	

LEX ECO

ACTUALIZADO PARA SER AÚN MÁS TÉCNICO

Lex Eco se comercializa ahora en una nueva temperatura de color (2700K) e incorpora la tecnología Dim to Warm y Tunable White.

LEX ECO 2700K

A		C		P	CCT	I	Flux	LOR
0	SYMMETRIC	25		10W	2700K	300mA	1370Lm	70%
1	ASYMMETRIC	26		17W	2700K	500mA	2070Lm	70%
		27		17W	2700K	500mA	2070Lm	70%
		28		17W	2700K	500mA	2070Lm	70%
		29		17W	2700K	500mA	2070Lm	70%
01	LEX ECO	30		24W	2700K	700mA	2690Lm	70%
02	LEX ECO BLUE	31		24W	2700K	700mA	2690Lm	70%
03	LEX ECO 205	32		24W	2700K	700mA	2690Lm	70%
04	LEX ECO 205 BLUE	33		24W	2700K	700mA	2690Lm	70%

OTHER DIM OPTIONS PLEASE CONSULT

LEX ECO New 2700K
CODE Generator Example

Reference from *The 2019 Collection*

A07X XX XX W
A B C

LEX ECO Tunable White & DIM to WARM

A		B		P	CCT	I	Flux	LOR
8	SYMMETRIC	01		21,5W	2700-5000K	600mA	2300Lm	70%
9	ASYMMETRIC	11		21,5W	2700-5000K	600mA	2300Lm	70%
		02		20W	1800-3000K	600mA	2150Lm	70%
		12		20W	1800-3000K	600mA	2150Lm	70%

Lex Eco New Tunable White & DIM to WARM
CODE Generator Example

L80B10 > 55.000 h | MacAdam Step 3 | 76° | 68°

OTHER DIM OPTIONS PLEASE CONSULT

New references

A36X XX 00 W
A B



New Spin 2700K
CODE Generator Example

Reference from *The 2019 Collection*

A222 02 0X WT

COLOR TEMPERATURE

- 0: 2700K
- 1: 3000K
- 2: 4000K*

* NOT AVAILABLE FOR SPIN 48V TRACK

SPIN

AHORA EN 2700K Y CON NUEVOS
TENSORES EN COLOR

Spin está ahora disponible en temperatura de color cálida (2700K) y, además, modifica el acabado de su tensor-alimentador, que pasa de ser transparente a un elegante color negro o blanco, en concordancia con la terminación de la pieza

Private residence, Valencia (Spain) | Design: Leticia Vila & Vicente Olivares



SALT MINI

NUEVO SISTEMA DE SUJECIÓN

Salt Mini ha modificado la disposición de sus tres tensores, que pasan a anclarse en el florón en lugar de a techo. Así, mejora su facilidad de instalación.



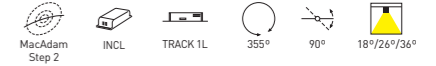
FIT 65 1L

El proyector Fit, en su versión 65, amplía su compatibilidad y ahora está disponible también para carriles monofásicos.



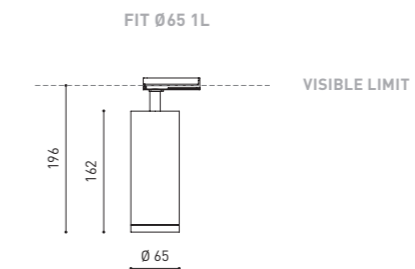
		P	CCT	Beam	I	Flux	LOR
FIT Ø65 1L	A366-01-11- WT NT	10,3W	3000K	18°	300mA	1300Lm	90%
	A366-01-12- WT NT	10,3W	4000K	18°	300mA	1320Lm	90%
	A366-01-21- WT NT	10,3W	3000K	26°	300mA	1300Lm	88%
	A366-01-22- WT NT	10,3W	4000K	26°	300mA	1320Lm	88%
	A366-01-31- WT NT	10,3W	3000K	36°	300mA	1300Lm	84%
	A366-01-32- WT NT	10,3W	4000K	36°	300mA	1320Lm	84%

LED | 220 V~ | CE | IP20 | CRI>90 | L80B10 >60.000h



ACCESSORY

FIT Ø65 Anti-glare Honeycomb Louver ** A356-00-00
NOT SOLD SEPARATELY

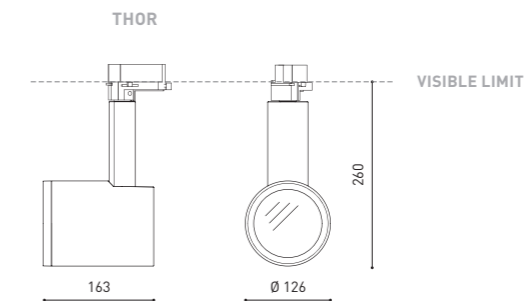


COLOUR | WT □ RAL 9016 | NT ■ RAL 9005 | MATERIAL | AL | PC |

** ACCESSORY AFFECTS THE LIGHTING PARAMETERS



		P	CCT	I	Flux	LOR
THOR 1	A226-11- Ⓞ -1- WT NT	27W	3000K	800mA	3750Lm	90%
	A226-11- Ⓞ -2- WT NT	27W	4000K	800mA	3820Lm	90%
THOR 2	A226-21- Ⓞ -1- WT NT	36W	3000K	1050mA	4750Lm	90%
	A226-21- Ⓞ -2- WT NT	36W	4000K	1050mA	4820Lm	90%
DALI	A226-24- Ⓞ -1- WT NT	36W	3000K	1050mA	4750Lm	90%
	A226-24- Ⓞ -2- WT NT	36W	4000K	1050mA	4820Lm	90%



Ⓞ	BEAM OPTIONS
1	17°
2	28°
3	40°

ACCESSORIES

TRACKLIGHT Surface Adapter

0000-55-43-	W
0000-55-39-	N



TRACKLIGHT Recessed Adapter

0000-55-44-	W
0000-55-40-	N



THOR High Chromatic Led*



THOR Anti-glare Screen*

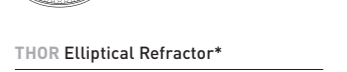
0802-00-00-	WT
0802-00-00-	NT



THOR Anti-glare Honeycomb Louver*

0802-02-00

NOT SOLD SEPARATELY



THOR Elliptical Refractor*

0802-04-00

NOT SOLD SEPARATELY



THOR Beam Mixer Diffuser*

0805-03-00

NOT SOLD SEPARATELY



COLOUR | WT □ RAL 9016 | NT ■ RAL 9005 | MATERIAL | AL | GL-TRANS |

OTHER CCT PLEASE CONSULT | * AFFECTS THE LIGHTING PARAMETERS

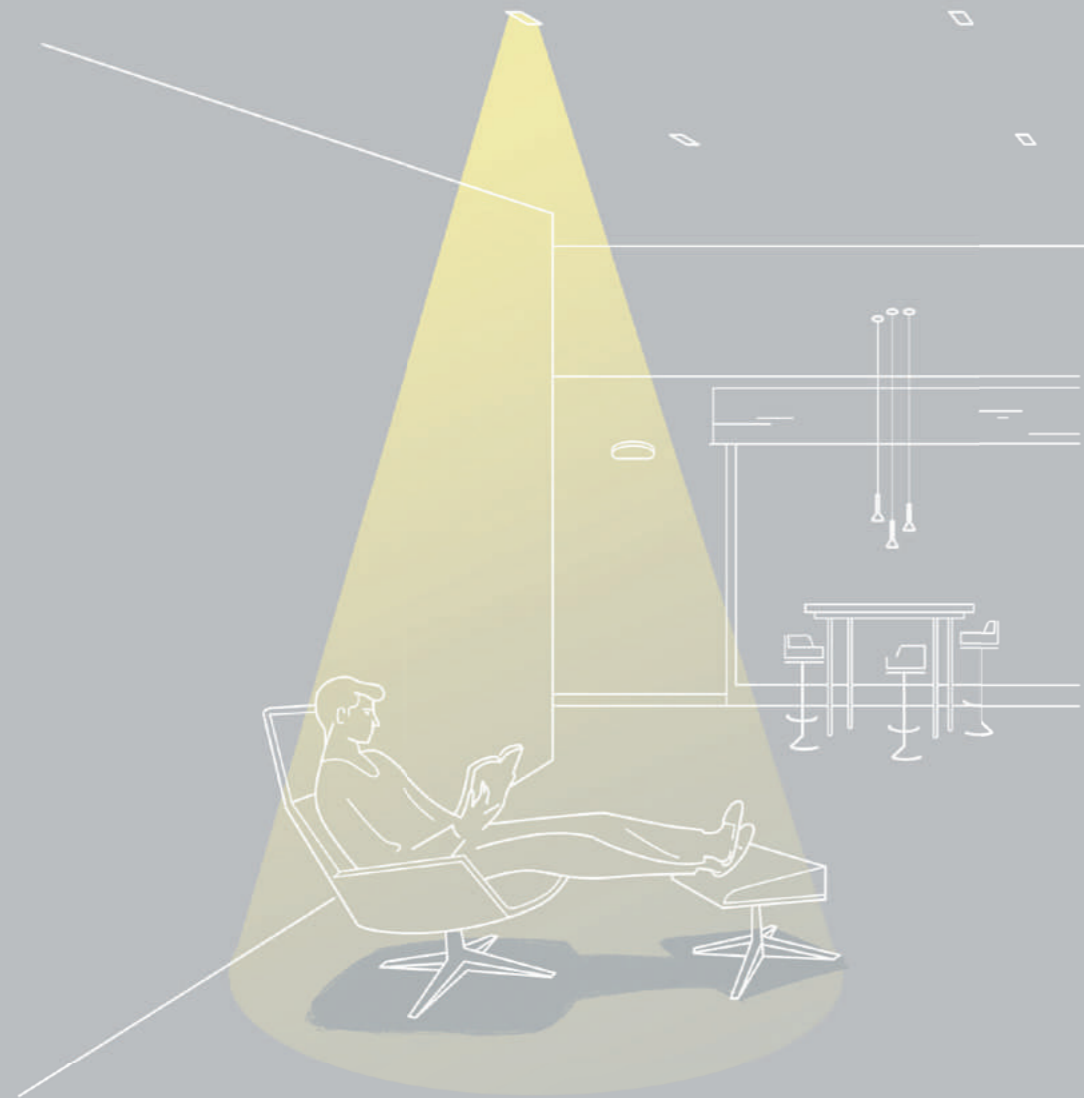
PLEASE CONSULT

THOR

NUEVAS PROPORCIONES

Thor reduce la longitud de su brazo en 30mm, gracias a la optimización del tamaño de su driver. Mejores proporciones y armonía para el proyector más potente de Arkoslight.





NEW

ARK-CONTROL SYSTEM

Ark-Control es un sistema inalámbrico que nos permite interactuar con nuestra instalación y crear un sistema mucho más versátil y a medida.

Totalmente compatible con los sistemas de encendido y apagado convencionales, podemos programar automatismos que se adapten a nuestras rutinas o distribuciones del espacio.

CONTROL INDIVIDUAL/GRUPOS

Controla individualmente o agrupa luminarias para que desempeñen funciones lumínicas conjuntas de forma rápida y sencilla.

ESCENAS

Diseña escenas lumínicas para diferentes actividades: trabajo, ver una película, una cita romántica...

Las configuraciones que se establezcan controlarán las luminarias para reproducir el ambiente deseado, según la ocasión.

ANIMACIONES

Crea ambientes dinámicos para generar cambios de una escena a otra.

PROGRAMACIÓN HORARIA

Establece una rutina para que la luz interactúe con el espacio, según tu horario personal.

ILUMINACIÓN CON TECNOLOGÍA "SMART"

ARK-Control aprovecha el potencial técnico de nuestras luminarias, especialmente aquellas con tecnología *Dim To Warm* y *Tunable White*. El sistema permite configurar una correcta intensidad y temperatura de color de la luz para adaptarse a las necesidades humanas en espacios interiores. Podemos convertir el espacio en un entorno dinámico gracias al papel activo de la luz. Todo, fácilmente desde nuestro dispositivo.

SUNRISE & SUNSET SCHEDULE

ARK-Control analiza la hora de salida y puesta del sol -según nuestra localización obtenida por GPS- para una regulación lumínica óptima durante el transcurso del día. Esta funcionalidad puede combinarse con sensores de luz natural, para aprovechar la luz solar y favorecer el ahorro energético.

ARKOSLIGHT ¡ENCIENDE LA LUZ!

Controla las luminarias con comandos de voz a través de asistentes virtuales como Alexa y otros. El sistema ARK-Control es compatible con los servicios domóticos de voz más utilizados. Configura la iluminación de tu casa hablándole directamente a tus dispositivos 'Smart'.

0434-00-31

Ark-Control 1-10V / DALI

Unidad de control inalámbrica para fuentes de alimentación LED con interfaz de atenuación 0-10V, 1-10V o DALI.



0434-00-34

Ark-Control Dimmer

Regulador Bluetooth para fuentes de alimentación LED regulables por recorte de fase.



0433-10-25

Ark-Control Passive

Controlador Bluetooth para redes DALI en modo broadcast -todas las luminarias controladas a la vez-. Carece de fuente de alimentación DALI propia. Por tanto, se alimenta directamente desde un bus DALI.



0434-00-35 | W | N |

Ark-Control User Interface W | N

Interfaz de usuario inalámbrica que se puede configurar a través de la aplicación Casambi. Los cuatro botones de destino pueden controlar una escena, una animación, una luminaria o un grupo de ellas -según la configuración deseada por el usuario-.



0434-01-07

Ark-Control Sensor

Sensor inalámbrico para el control en función de la luz ambiente y la detección de presencia.



0434-01-08

Ark-Control Driver

Fuente de alimentación de 60W con interfaz inalámbrica bluetooth incorporada.



0434-01-39

Ark control Zigbee driver

Fuente de alimentación de 60W con interfaz Zigbee incorporada.



0434-01-38

Ark control Zigbee interface

Controlador Zigbee para luminarias con fuentes de alimentación DALI. Control de hasta 8 luminarias DALI. Compatible con *Tunable White*.



0434-01-31 | N |

Adapter for Wireless Control. Double Compatibility

ARK-Control Ready:

Compatible con tecnología Casambi. Controla hasta 4 grupos de luminarias (en un mismo carril).

A.A.G. Stucchi LightControl Ready:

Compatible con la APP A.A.G. Stucchi LightControl. Controla individualmente hasta 64 luminarias (en un mismo carril).



0434-01-32 | N |

Adapter for Wireless Control Stucchi

Compatible con la APP A.A.G. Stucchi LightControl. Controla individualmente hasta 64 luminarias (en un mismo carril).



ARKOSLIGHT®

Calle N · Pol. Ind. EL OLIVERAL
46394 Ribarroja del Turia · Valencia (Spain)
Tel. +34 961 667 207 · Fax +34 961 667 054
info@arkoslight.com · www.arkoslight.com
France: +33 182 885 200 · Italia: +39 02 9475 0007
Deutschland: +49 22 182 829 313



LIGHT&LIFE
— DESDE 1984 —